



ARETAIL

calle jesus guridi 1 / pz. santa barbar

VITORIA-GASTEIZ

+34 932 931 905 // +34 918 005 468

www.aretail.es

calle jesus
guridi 1 / pz.
santa barbar

Vitoria-Gasteiz



ZONE DESCRIPTION

Commercial premises at street level, with a total of 315 m2 distributed in a ground floor.

The premises are located between Desamparados and Judimendi. It has a high commercial volume as it is surrounded by the Mercado de Abastos, the Dendaraba Shopping Centre and the Corte Inglés, as well as small retailers at street level and all kinds of services. So it is a perfect opportunity to start any commercial activity, and the premises are in perfect condition, ready to move into.

The property is very well connected by public transport.

Bus: 10, 3, 5

Light rail: TG2

If you are looking for premises in a good location, in a busy area and well communicated, do not hesitate and contact us for more information!



PROPERTY DESCRIPTION

CURRENT TENANT	NO TENANT
STORE	SURFACE m ²
Ground floor	315 m ²
TOTAL	315 m²



ECONOMICS INFORMATION

Asking price	€ 3,250 + taxes
Professional Fees	15% of the annual rent or the average of the escalation + taxes



calle jesus
guridi 1 / pz.
santa barbar

Vitoria-Gasteiz

PROPERTY | PICTURES



calle jesus
guridi 1 / pz.
santa barbar

Vitoria-Gasteiz

PROPERTY | PICTURES



calle jesus
guridi 1 / pz.
santa barbar

Vitoria-Gasteiz

PROPERTY | PICTURES



calle jesus
guridi 1 / pz.
santa barbar

Vitoria-Gasteiz

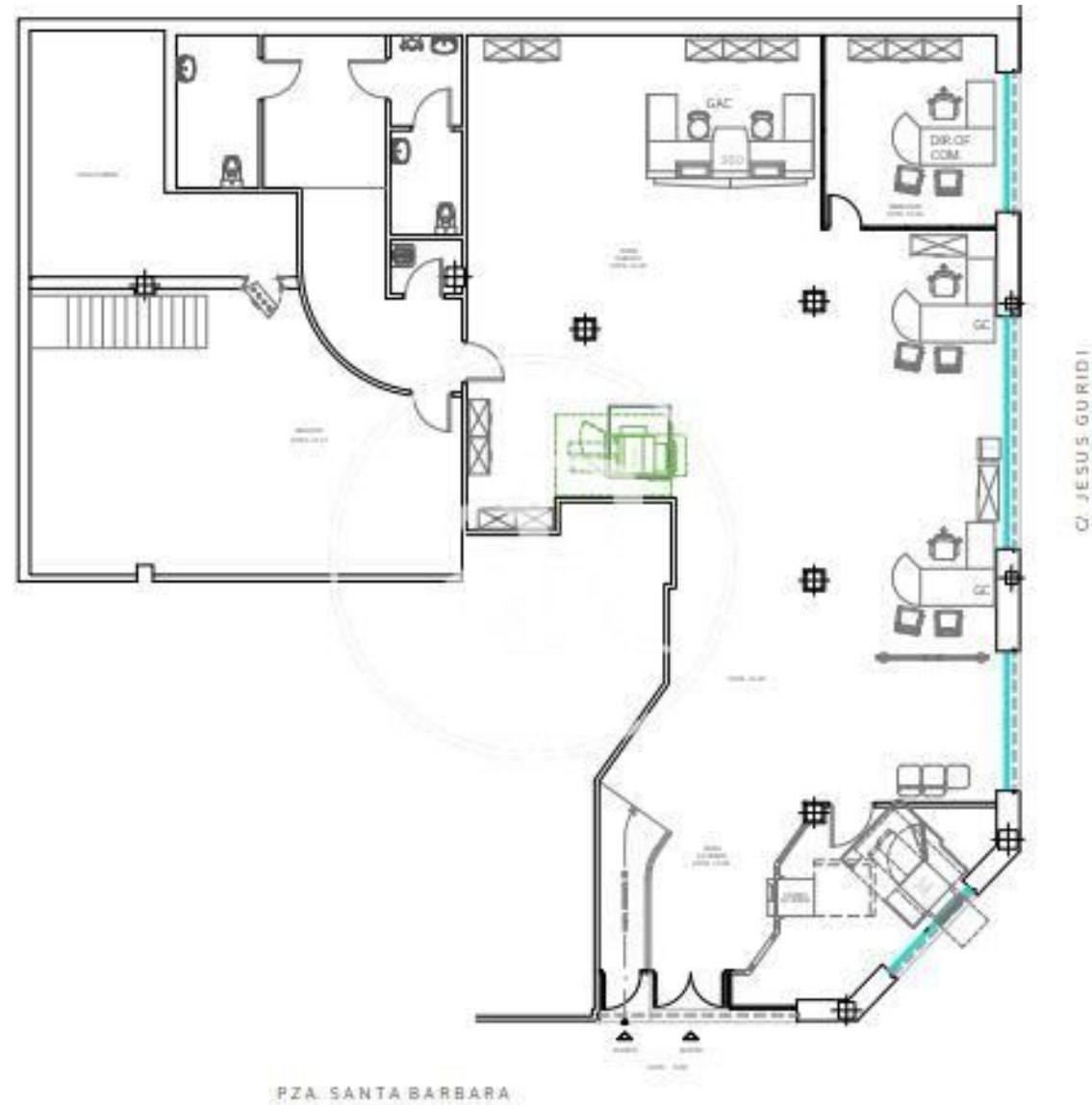
PROPERTY | PICTURES



calle jesus
guridi 1 / pz.
santa barbar

Vitoria-Gasteiz

PROPERTY | PICTURES



calle jesus
guridi 1 / pz.
santa barbar

Vitoria-Gasteiz

PROPERTY | PICTURES



calle jesus
guridi 1 / pz.
santa barbar

Vitoria-Gasteiz

PROPERTY | PICTURES



calle jesus
guridi 1 / pz.
santa barbar

Vitoria-Gasteiz

PROPERTY | PICTURES





Passeig de Gràcia, 85, 8^a planta
+34 935 288 909 • 08008 Barcelona

Serrano, 60, 4^a planta
+34 918 005 465 • 28001 Madrid

www.aretail.es

This information has been prepared by ARETAIL, with different information about the market. With the acceptance of this document, the recipient of the same undertakes not to copy, reproduce or distribute this Confidential Document to third parties, neither in its entirety nor in part, without the prior consent of ARETAIL, expressed in writing, as well as to keep permanently confidential all the information contained therein and that is not in the public domain

This Confidential Document has been prepared in order to provide general information about the real estate market. Although the information contained in this document is considered to reflect the true image of it, ARETAIL expressly declines all responsibility for the statements, express or implied, contained in this Confidential Document, for its omissions, or for any other oral or written communications made to any interested party.

Nothing contained in this Confidential Document is a promise or forecast for the future. ARETAIL reserves the right to request the future return of this Document at any time.