



ARETAIL

plaza del mil-lenari de catalunya 2

---

VIC

+34 932 931 905 // +34 918 005 468

[www.aretail.es](http://www.aretail.es)



# plaza del mil-lenari de catalunya 2

Vic



## ZONE DESCRIPTION

Magnificent commercial premises located in Vic, very close to the University of Vic and the train station. It is a fairly commercial area, since a few meters away we find the street Jacint Verdaguer, one of the commercial axes of the city.

This property consists of 1,214 sqm distributed on a ground floor and it is a local with a very good facade.

It has very good public transport connections:

Train: R3

Bus: 406, 410, E12, L-28, L20

If you are looking for premises in a residential area surrounded by services, do not hesitate to contact us!



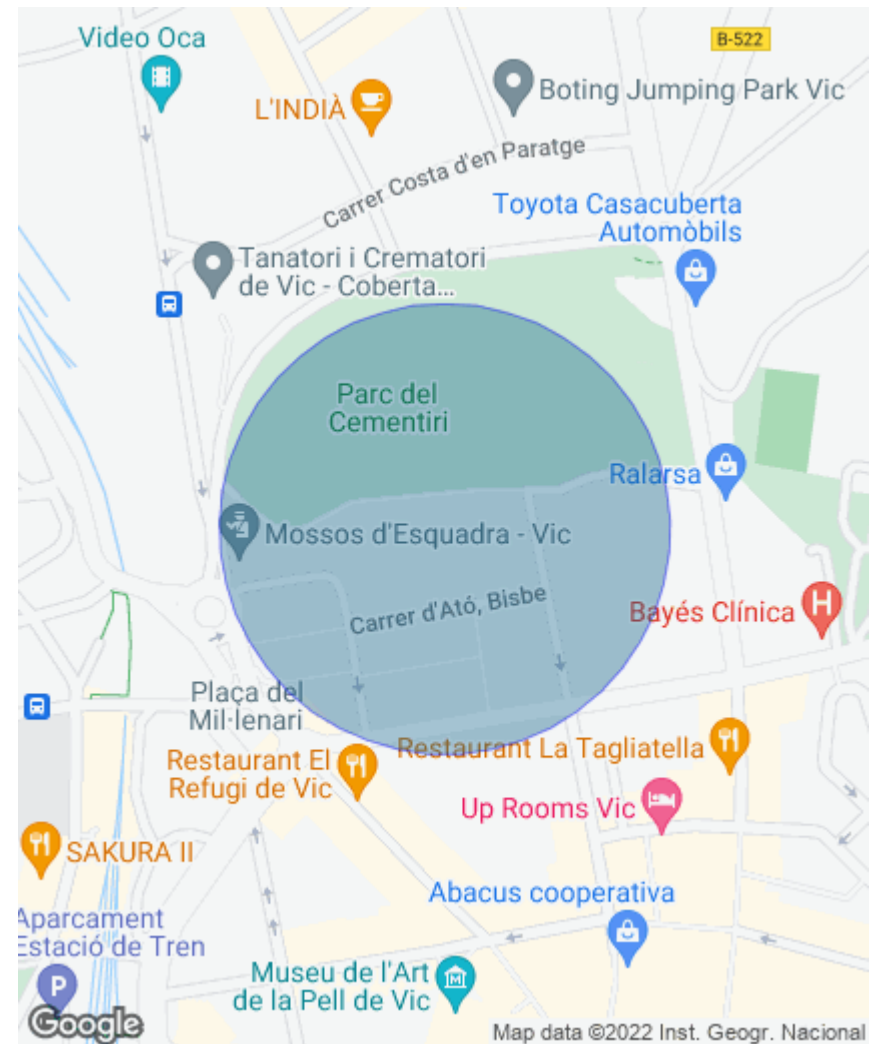
## PROPERTY DESCRIPTION

CURRENT TENANT	NO TENANT
STORE	SURFACE m <sup>2</sup>
Ground floor	1214 m <sup>2</sup>
<b>TOTAL</b>	<b>1214 m<sup>2</sup></b>



## ECONOMICS INFORMATION

Asking price	€ 6,958 + taxes
Professional Fees	15% of the annual rent or the average of the escalation + taxes



plaza del  
mil-lenari de  
catalunya 2

Vic

PROPERTY | PICTURES



plaza del  
mil-lenari de  
catalunya 2

Vic

PROPERTY | PICTURES





plaza del  
mil-lenari de  
catalunya 2

Vic

PROPERTY | PICTURES



plaza del  
mil-lenari de  
catalunya 2

Vic

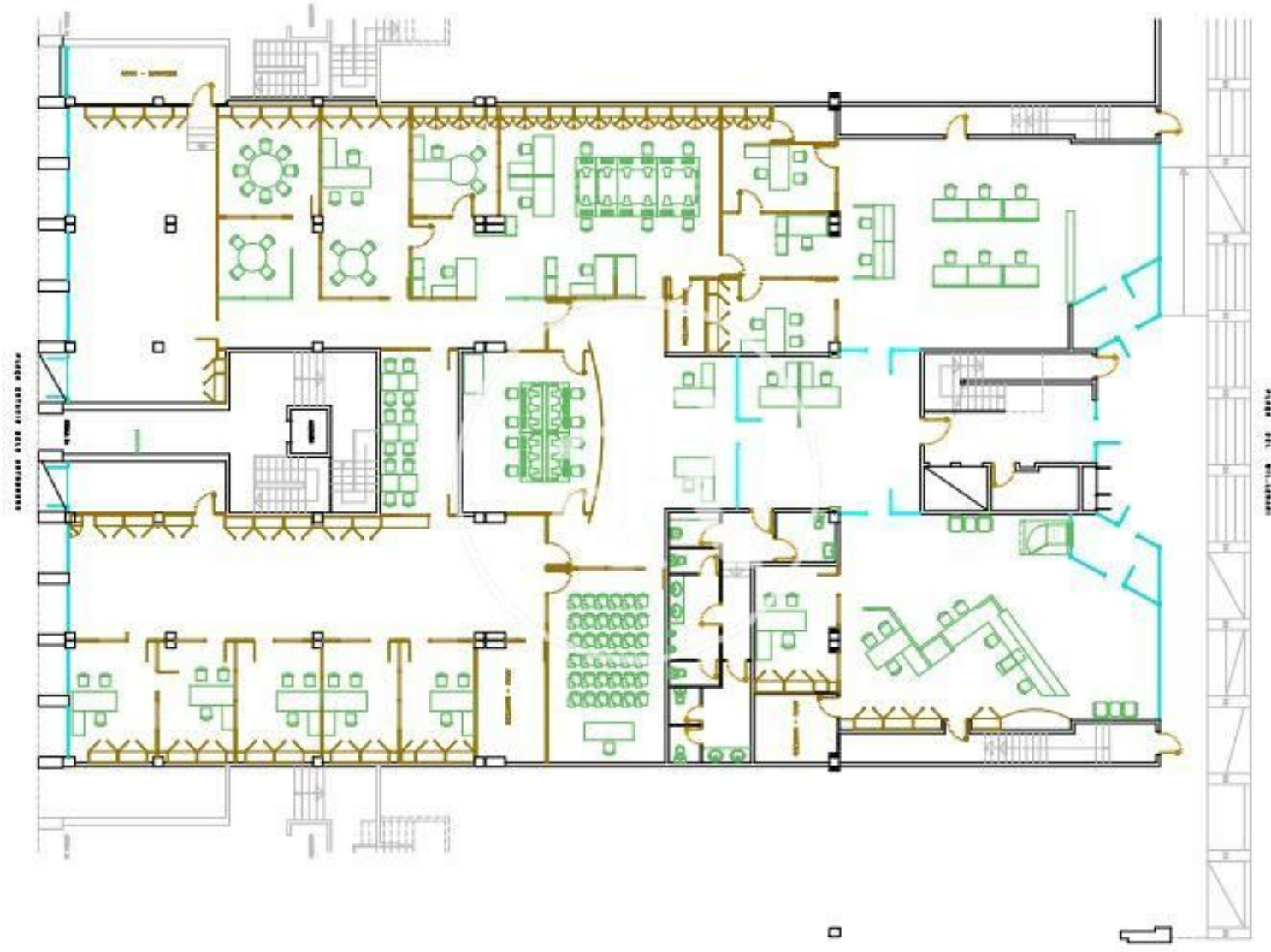
PROPERTY | PICTURES



# plaza del mil-lenari de catalunya 2

Vic

PROPERTY | PICTURES





plaza del  
mil-lenari de  
catalunya 2

Vic

PROPERTY | PICTURES





plaza del  
mil-lenari de  
catalunya 2

Vic

PROPERTY | PICTURES



plaza del  
mil-lenari de  
catalunya 2

Vic

PROPERTY | PICTURES







Passeig de Gràcia, 85, 8<sup>a</sup> planta  
+34 935 288 909 • 08008 Barcelona

Serrano, 60, 4<sup>a</sup> planta  
+34 918 005 465 • 28001 Madrid

[www.aretail.es](http://www.aretail.es)

This information has been prepared by ARETAIL, with different information about the market. With the acceptance of this document, the recipient of the same undertakes not to copy, reproduce or distribute this Confidential Document to third parties, neither in its entirety nor in part, without the prior consent of ARETAIL, expressed in writing, as well as to keep permanently confidential all the information contained therein and that is not in the public domain

This Confidential Document has been prepared in order to provide general information about the real estate market. Although the information contained in this document is considered to reflect the true image of it, ARETAIL expressly declines all responsibility for the statements, express or implied, contained in this Confidential Document, for its omissions, or for any other oral or written communications made to any interested party.

Nothing contained in this Confidential Document is a promise or forecast for the future. ARETAIL reserves the right to request the future return of this Document at any time.