



ARETAIL

carrer major 31

---

TONA

+34 932 931 905 // +34 918 005 468  
[www.aretail.es](http://www.aretail.es)



# carrer major 31 Tona



## ZONE DESCRIPTION

Magnificent opportunity, commercial premises situated in Tona, town next to the motorway from Barcelona to Vic C-17 and two kilometres from the railway station of Balenyà-Tona-Seva of the line from Barcelona to Puigcerdà.

This is a corner local, at street level, with a total of 394 sqm, distributed in a ground floor of 211 sqm, a basement of 45 sqm and a loft of 138 sqm<sup>2</sup>.

The property is in a very good location, next to Barcelona street, being the most commercial area of the town, with a variety of retailers and services.

If you are interested in the property or need more information, do not hesitate to contact us!



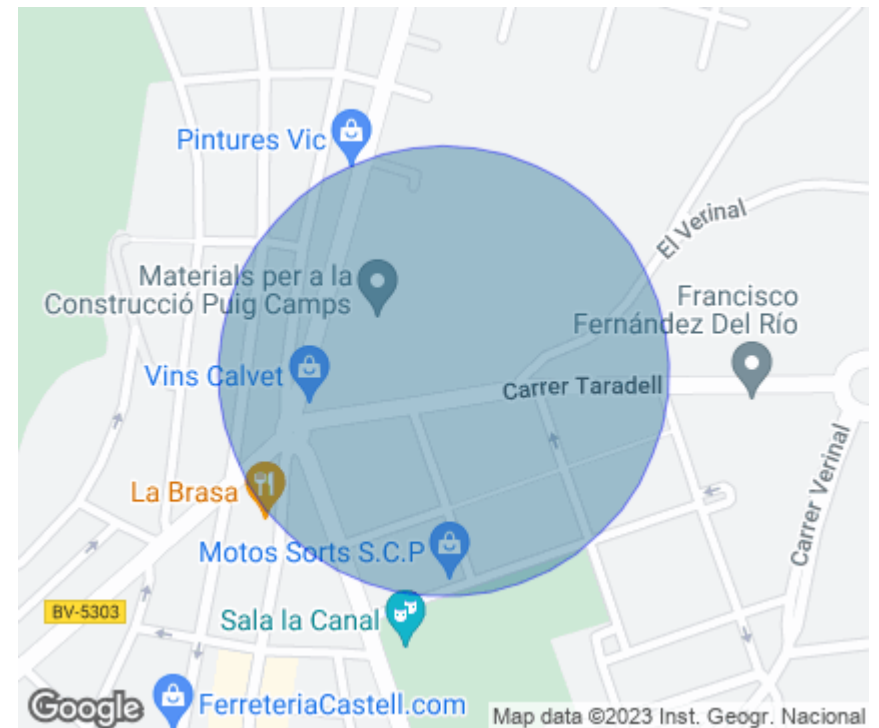
## PROPERTY DESCRIPTION

CURRENT TENANT	NO TENANT
STORE	SURFACE m <sup>2</sup>
First floor	138 m <sup>2</sup>
Ground floor	211 m <sup>2</sup>
Basement	45 m <sup>2</sup>
<b>TOTAL</b>	<b>394 m<sup>2</sup></b>



## ECONOMICS INFORMATION

Asking price	€ 1,710 + taxes
Professional Fees	15% of the annual rent or the average of the escalation + taxes



carrer major  
31  
Tona

PROPERTY | PICTURES











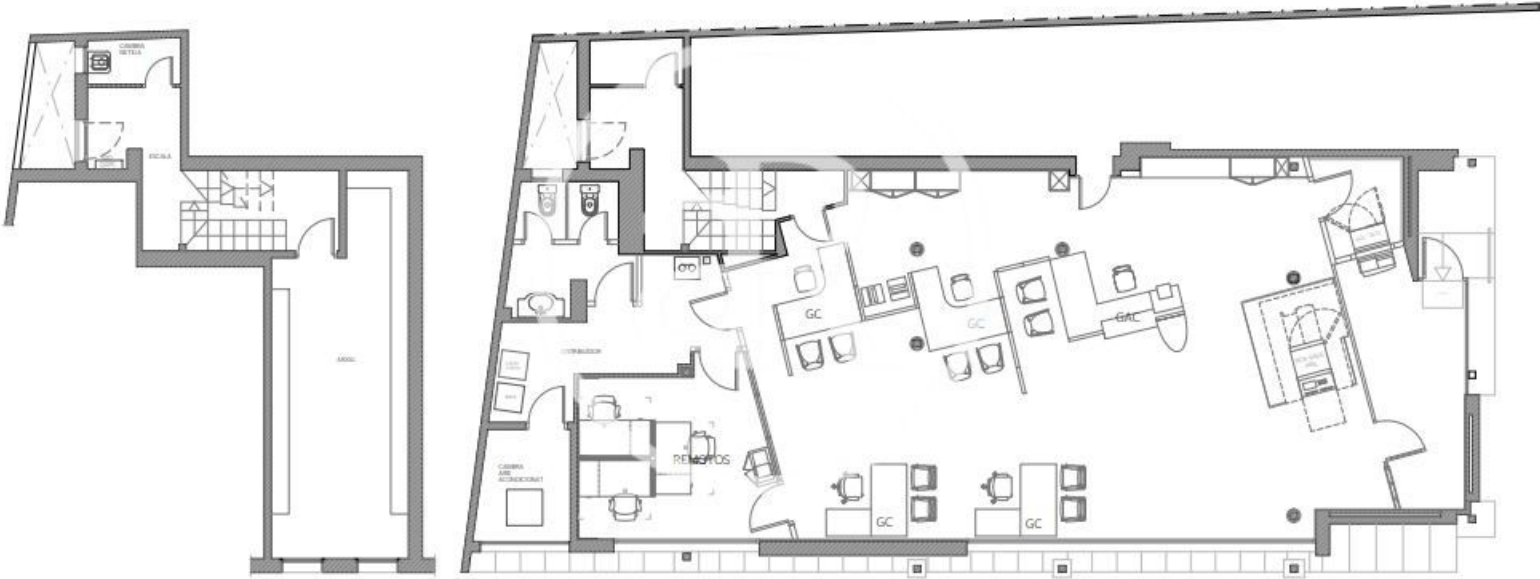
















Passeig de Gràcia, 85, 8<sup>a</sup> planta  
+34 935 288 909 • 08008 Barcelona

Serrano, 60, 4<sup>a</sup> planta  
+34 918 005 465 • 28001 Madrid

[www.aretail.es](http://www.aretail.es)

This information has been prepared by ARETAIL, with different information about the market. With the acceptance of this document, the recipient of the same undertakes not to copy, reproduce or distribute this Confidential Document to third parties, neither in its entirety nor in part, without the prior consent of ARETAIL, expressed in writing, as well as to keep permanently confidential all the information contained therein and that is not in the public domain

This Confidential Document has been prepared in order to provide general information about the real estate market. Although the information contained in this document is considered to reflect the true image of it, ARETAIL expressly declines all responsibility for the statements, express or implied, contained in this Confidential Document, for its omissions, or for any other oral or written communications made to any interested party.

Nothing contained in this Confidential Document is a promise or forecast for the future. ARETAIL reserves the right to request the future return of this Document at any time.