



ARETAIL

avinguda de l'estatut 155

RUBÍ

+34 932 931 905 // +34 918 005 468

www.aretail.es

avinguda de l'estatut 155

Rubí



ZONE DESCRIPTION

Magnificent opportunity, retail space located in the municipality of Rubí, in the province of Barcelona.

It is a place with a very good facade, at street level that has 272 sqm distributed on the ground floor. It is located in a residential area, where we can find shops and services. Therefore, it is a perfect location for any activity, since the area has a high volume of traffic.

It has good communication by public transport:

Subway: S7

Train: S1

Bus: 2, 5, B7, B8, L4, SJ

If you are looking for a place in a well-connected area, do not hesitate and contact us for more information!



PROPERTY DESCRIPTION

CURRENT TENANT	NO TENANT
STORE	SURFACE m ²
Ground floor	272 m ²
TOTAL	272 m ²



ECONOMICS INFORMATION

Asking price	€ 1,783 + taxes
Professional Fees	15% of the annual rent or the average of the escalation + taxes



avinguda de
l'estatut 155

Rubí

PROPERTY | PICTURES



avinguda de
l'estatut 155

Rubí

PROPERTY | PICTURES



avinguda de
l'estatut 155

Rubí

PROPERTY | PICTURES

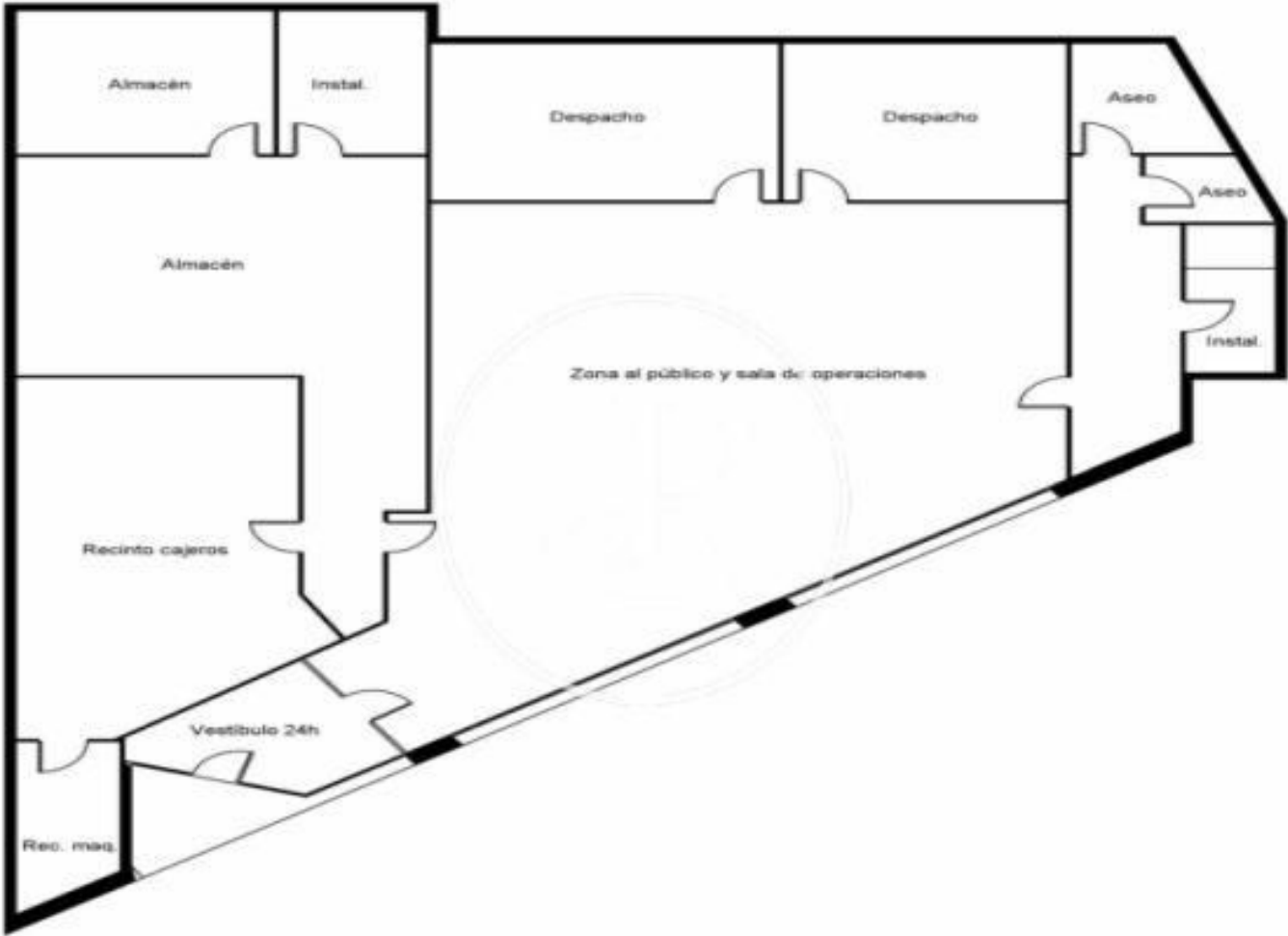


avinguda de
l'estatut 155

Rubí

PROPERTY | PICTURES





avinguda de
l'estatut 155

Rubí

PROPERTY | PICTURES



avinguda de
l'estatut 155

Rubí

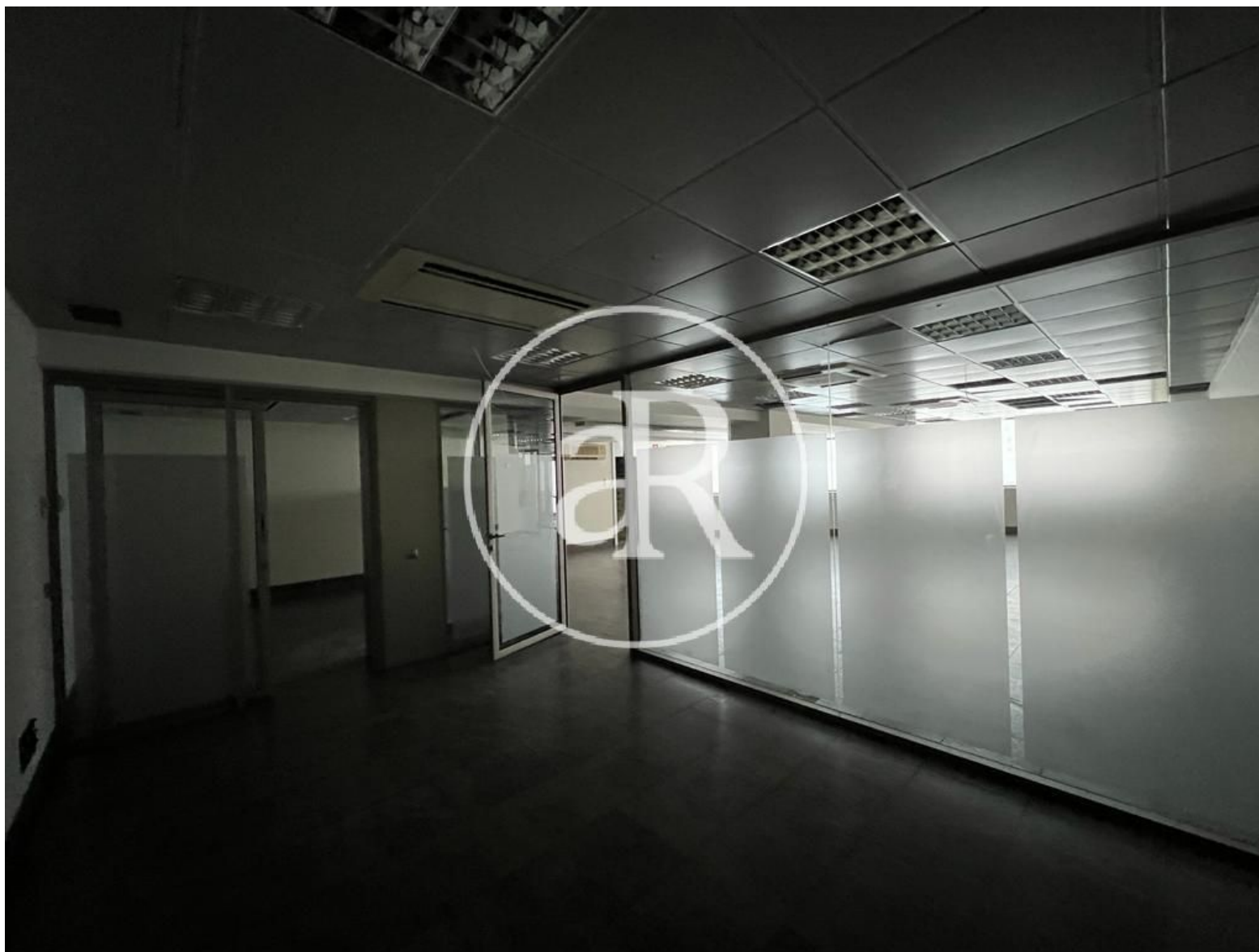
PROPERTY | PICTURES



avinguda de
l'estatut 155

Rubí

PROPERTY | PICTURES





Passeig de Gràcia, 85, 8^a planta
+34 935 288 909 • 08008 Barcelona

Serrano, 60, 4^a planta
+34 918 005 465 • 28001 Madrid

www.aretail.es

This information has been prepared by ARETAIL, with different information about the market. With the acceptance of this document, the recipient of the same undertakes not to copy, reproduce or distribute this Confidential Document to third parties, neither in its entirety nor in part, without the prior consent of ARETAIL, expressed in writing, as well as to keep permanently confidential all the information contained therein and that is not in the public domain

This Confidential Document has been prepared in order to provide general information about the real estate market. Although the information contained in this document is considered to reflect the true image of it, ARETAIL expressly declines all responsibility for the statements, express or implied, contained in this Confidential Document, for its omissions, or for any other oral or written communications made to any interested party.

Nothing contained in this Confidential Document is a promise or forecast for the future. ARETAIL reserves the right to request the future return of this Document at any time.