



ARETAIL

avenida de españa 10

PINTO

+34 932 931 905 // +34 918 005 468

www.aretail.es

avenida de españa 10

Pinto



ZONE DESCRIPTION

Commercial premises at street level, with a total of 167 sqm, distributed on a ground floor.

The premises are located in the town of Pinto, 20 km from the center of Madrid. A few meters away we find the Municipal Park, an area to visit in the municipality and right next to the premises is located the Plaza 8 de Marzo.

Also, within walking distance is the Plaza Eboli Shopping Center. It is an area with a high commercial volume, as there is a lot of both commercial and catering offer. So it is an ideal area to start any activity.

The property is very well connected by public transport.



PROPERTY DESCRIPTION

CURRENT TENANT	NO TENANT
STORE	SURFACE m ²
Ground floor	167 m ²
TOTAL	167 m ²



ECONOMICS INFORMATION

Asking price	€ 1,550 + taxes
Professional Fees	15% of the annual rent or the average of the escalation + taxes



avenida de
españa 10

Pinto

PROPERTY | PICTURES



avenida de
españa 10

Pinto

PROPERTY | PICTURES



avenida de
españa 10

Pinto

PROPERTY | PICTURES



avenida de
españa 10

Pinto

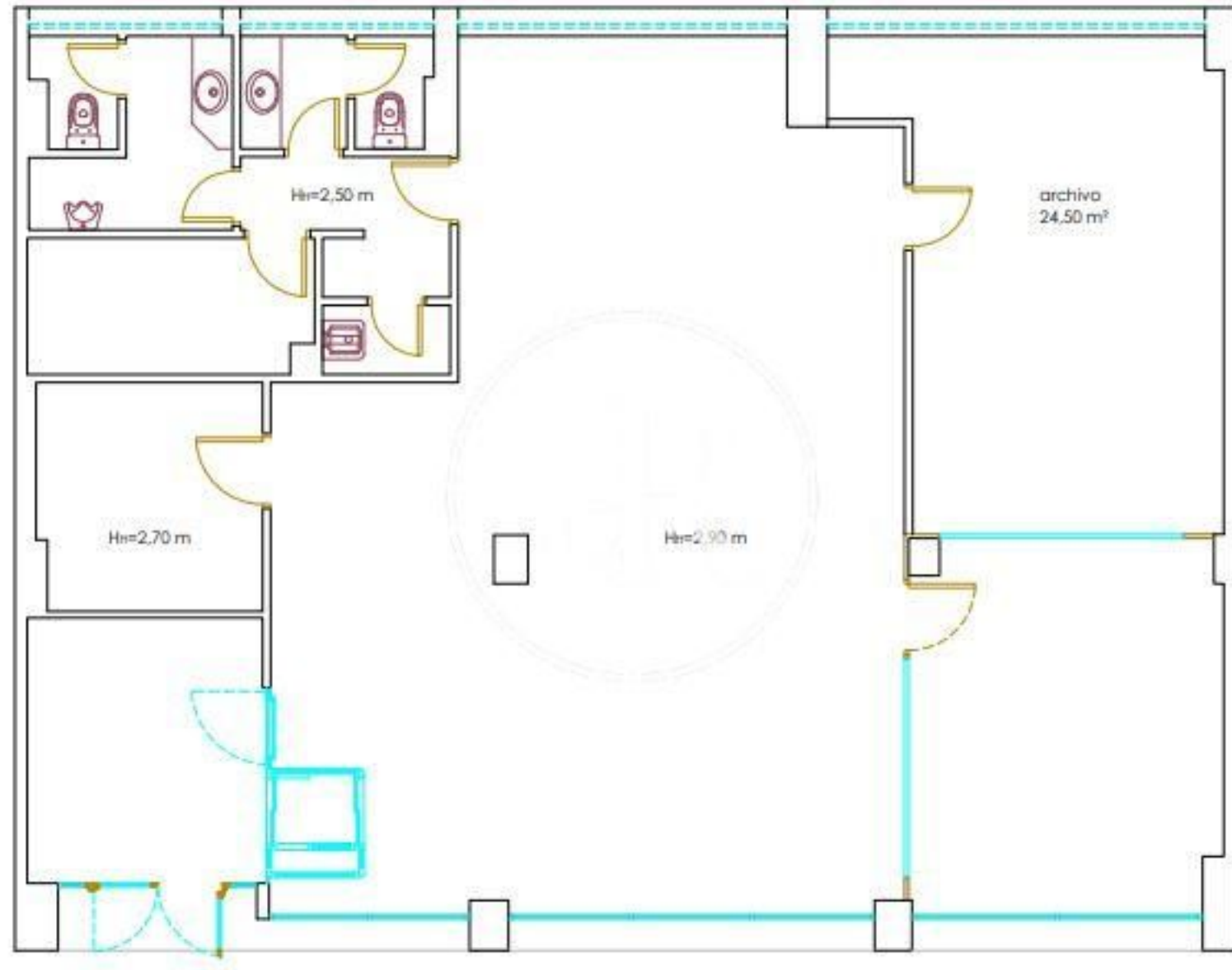
PROPERTY | PICTURES



avenida de
españa 10

Pinto

PROPERTY | PICTURES



avenida de
españa 10

Pinto

PROPERTY | PICTURES



avenida de
españa 10

Pinto

PROPERTY | PICTURES



avenida de
españa 10

Pinto

PROPERTY | PICTURES





Passeig de Gràcia, 85, 8^a planta
+34 935 288 909 • 08008 Barcelona

Serrano, 60, 4^a planta
+34 918 005 465 • 28001 Madrid

www.aretail.es

This information has been prepared by ARETAIL, with different information about the market. With the acceptance of this document, the recipient of the same undertakes not to copy, reproduce or distribute this Confidential Document to third parties, neither in its entirety nor in part, without the prior consent of ARETAIL, expressed in writing, as well as to keep permanently confidential all the information contained therein and that is not in the public domain

This Confidential Document has been prepared in order to provide general information about the real estate market. Although the information contained in this document is considered to reflect the true image of it, ARETAIL expressly declines all responsibility for the statements, express or implied, contained in this Confidential Document, for its omissions, or for any other oral or written communications made to any interested party.

Nothing contained in this Confidential Document is a promise or forecast for the future. ARETAIL reserves the right to request the future return of this Document at any time.