



ARETAIL

calle marques de pidal 9

OVIEDO

+34 932 931 905 // +34 918 005 468

www.aretail.es

calle marques de pidal 9

Oviedo



ZONE DESCRIPTION

Commercial premises at street level, with a total of 215 sqm, distributed in a ground floor of 121 sqm and a basement of 94 sqm.

The premises are located in Oviedo, very close to the Campo San Francisco Park, it is one of the most commercial areas of the city, has a high volume of both pedestrian and road traffic, as we can find all kinds of services around. Therefore, it is a perfect area to start any commercial activity.

The location has a very good communication by public transport:

Bus: C-FACULTADES-LUGONES, E-LAS CAMPAS-LA MONXINA, G-PUERTO-MONTECERRAO, H-SERRANO-PARQUE PRINCIPADO, L-SAN ANDRES-TUDELA VEGUIN, OVIEDO-GIJÓN [PARADAS], OVIEDO-POLA DE LAVIANA [OLLONIEGO].
Train: EL ENTREGO-AVILÉS



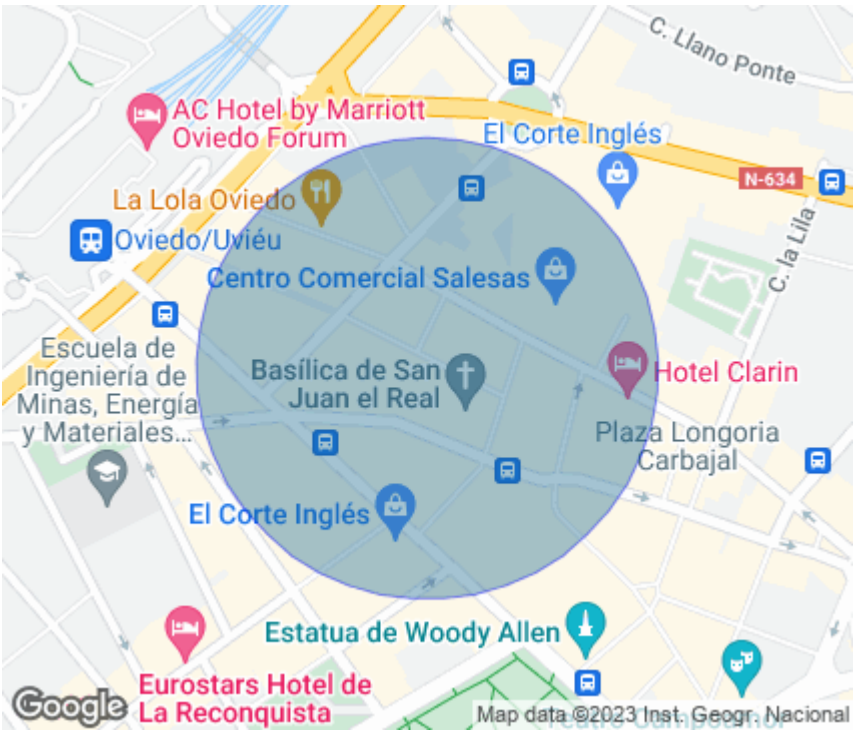
PROPERTY DESCRIPTION

CURRENT TENANT	NO TENANT
STORE	SURFACE m ²
Ground floor	121 m ²
Basement	94 m ²
TOTAL	215 m ²



ECONOMICS INFORMATION

Asking price	€ 3,833 + taxes
Professional Fees	15% of the annual rent or the average of the escalation + taxes



calle marques
de pidal 9

Oviedo

PROPERTY | PICTURES



calle marques
de pidal 9
Oviedo

PROPERTY | PICTURES



calle marques
de pidal 9
Oviedo

PROPERTY | PICTURES



calle marques
de pidal 9
Oviedo

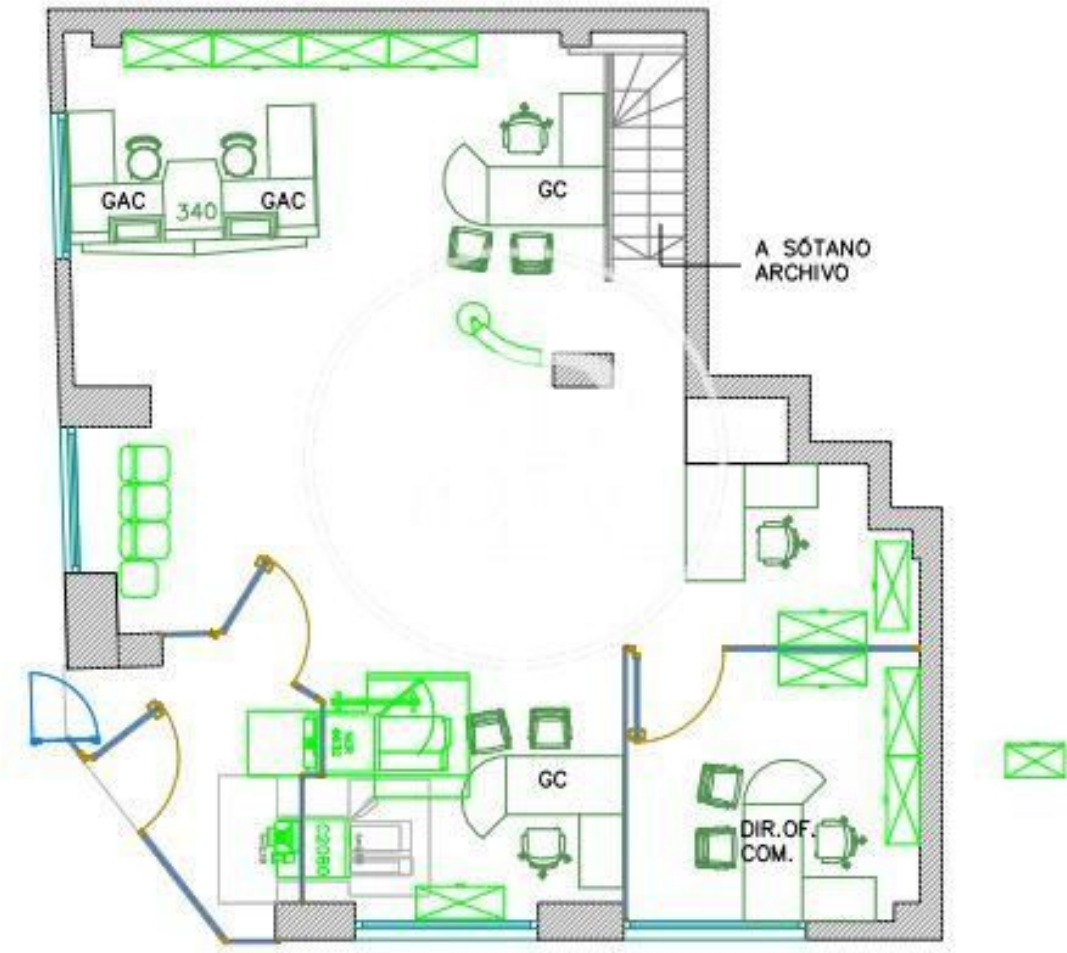
PROPERTY | PICTURES



calle marques
de pidal 9

Oviedo

PROPERTY | PICTURES





Passeig de Gràcia, 85, 8^a planta
+34 935 288 909 • 08008 Barcelona

Serrano, 60, 4^a planta
+34 918 005 465 • 28001 Madrid

www.aretail.es

This information has been prepared by ARETAIL, with different information about the market. With the acceptance of this document, the recipient of the same undertakes not to copy, reproduce or distribute this Confidential Document to third parties, neither in its entirety nor in part, without the prior consent of ARETAIL, expressed in writing, as well as to keep permanently confidential all the information contained therein and that is not in the public domain

This Confidential Document has been prepared in order to provide general information about the real estate market. Although the information contained in this document is considered to reflect the true image of it, ARETAIL expressly declines all responsibility for the statements, express or implied, contained in this Confidential Document, for its omissions, or for any other oral or written communications made to any interested party.

Nothing contained in this Confidential Document is a promise or forecast for the future. ARETAIL reserves the right to request the future return of this Document at any time.