



ARETAIL

carrer del doctor marti julia 60

L'HOSPITALET DE LLOBREGAT

+34 932 931 905 // +34 918 005 468

www.aretail.es

carrer del doctor marti julia 60

L'Hospitalet de
Llobregat



ZONE DESCRIPTION

Magnificent opportunity, retail space located in the municipality of l'Hospitalet de Llobregat, province of Barcelona.

It is a premises at street level that has 279 sqm distributed on the ground floor, it is located in the most commercial area of Hospitalet de Llobregat, very close to one of the main streets, the Sants road, at the height of Badal. In the area we find a high volume of retailers and services of all kinds. So it is a very good area to start any commercial activity.

In addition, the property is very well connected by public transport.

Subway: L5, L9S

Train: R17, R2S, R4

Bus: D20, H8, L62, M12, V1, V7

If you are looking for a place with a good location and well connected, do not hesitate and contact us for more information!



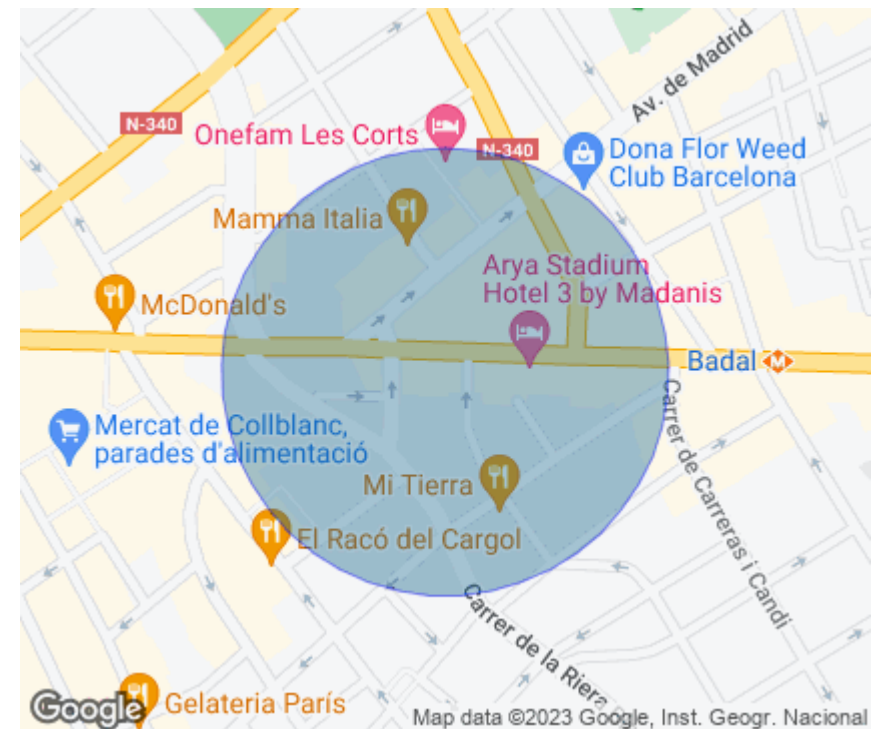
PROPERTY DESCRIPTION

CURRENT TENANT	NO TENANT
STORE	SURFACE m ²
Ground floor	279 m ²
TOTAL	279 m²



ECONOMICS INFORMATION

Asking price	€ 2,516 + taxes
Professional Fees	15% of the annual rent or the average of the escalation + taxes



**carrer del
doctor marti
julia 60**

L'Hospitalet de
Llobregat

PROPERTY | PICTURES



**carrer del
doctor marti
julia 60**

L'Hospitalet de
Llobregat

PROPERTY | PICTURES



**carrer del
doctor marti
julia 60**

L'Hospitalet de
Llobregat

PROPERTY | PICTURES



**carrer del
doctor marti
julia 60**

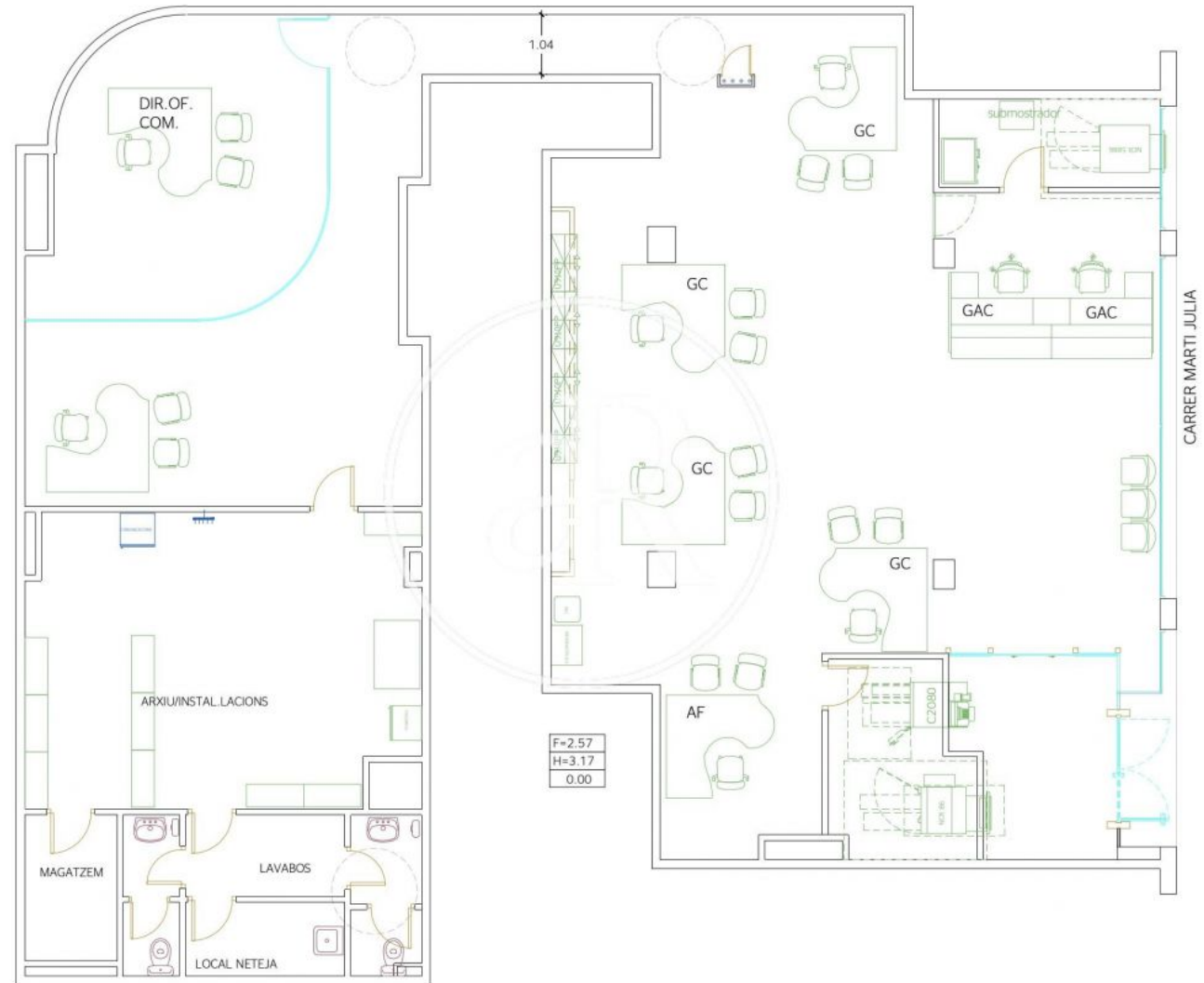
L'Hospitalet de
Llobregat

PROPERTY | PICTURES



carrer del
doctor marti
julia 60

L'Hospitalet de
Llobregat



**carrer del
doctor marti
julia 60**

L'Hospitalet de
Llobregat

PROPERTY | PICTURES



carrer del
doctor marti
julia 60

L'Hospitalet de
Llobregat

PROPERTY | PICTURES



**carrer del
doctor marti
julia 60**

L'Hospitalet de
Llobregat

PROPERTY | PICTURES





Passeig de Gràcia, 85, 8^a planta
+34 935 288 909 • 08008 Barcelona

Serrano, 60, 4^a planta
+34 918 005 465 • 28001 Madrid

www.aretail.es

This information has been prepared by ARETAIL, with different information about the market. With the acceptance of this document, the recipient of the same undertakes not to copy, reproduce or distribute this Confidential Document to third parties, neither in its entirety nor in part, without the prior consent of ARETAIL, expressed in writing, as well as to keep permanently confidential all the information contained therein and that is not in the public domain

This Confidential Document has been prepared in order to provide general information about the real estate market. Although the information contained in this document is considered to reflect the true image of it, ARETAIL expressly declines all responsibility for the statements, express or implied, contained in this Confidential Document, for its omissions, or for any other oral or written communications made to any interested party.

Nothing contained in this Confidential Document is a promise or forecast for the future. ARETAIL reserves the right to request the future return of this Document at any time.