



ARETAIL

carrer anselm clavé 59

GRANOLLERS

+34 932 931 905 // +34 918 005 468

www.aretail.es

carrer anselm
clavé 59
Granollers



ZONE DESCRIPTION

Commercial premises located on Anselm Clavé Street, one of the main commercial hubs in the city of Granollers. Surrounded by numerous well-known retailers and located in an area with high foot and vehicle traffic.

It has a total of 150 m², distributed over a ground floor of 75 m² and a first floor of 75 m². Expandable to a total of 200 m² on the ground floor and 75 m² on the first floor.

This is a commercial premises with very good visibility and a very open layout.

Very well connected by public transport:

Bus: 260, 330, 416, 500, 560.

Train: R2N, R3, R2, R8, R11.

Please do not hesitate to contact us for further information.



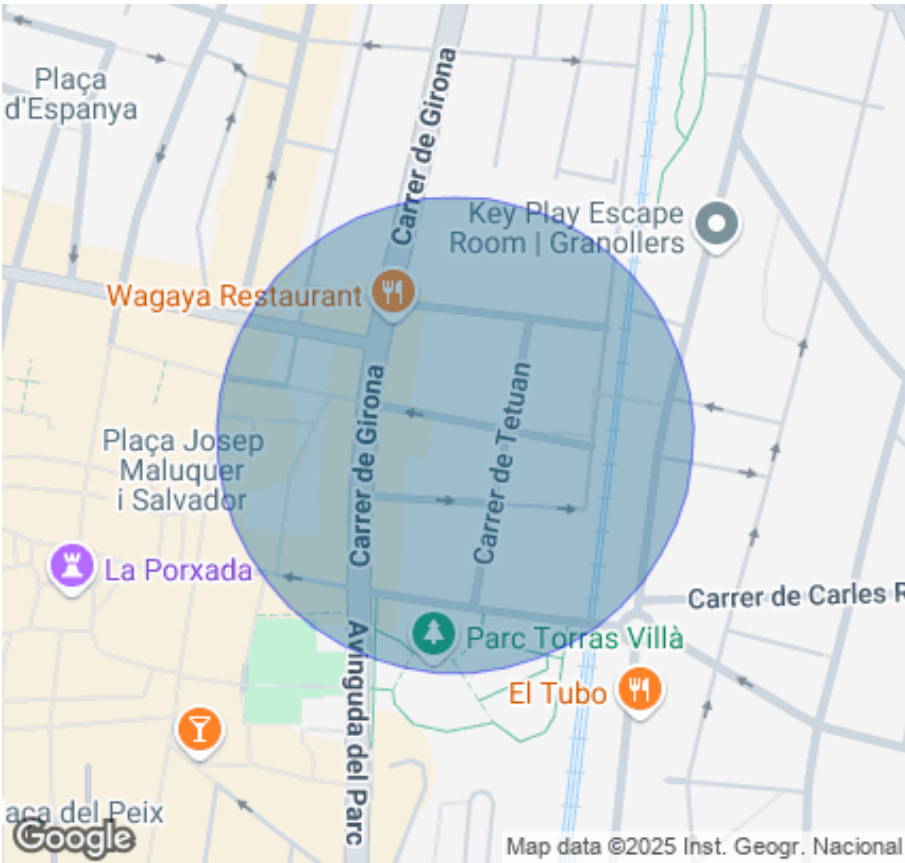
PROPERTY DESCRIPTION

CURRENT TENANT	NO TENANT
STORE	SURFACE m ²
First floor	75 m ²
Ground floor	75 m ²
TOTAL	150 m ²



ECONOMICS INFORMATION

Asking price	€ 7,500 + taxes
Professional Fees	15% of the annual rent or the average of the escalation + taxes



carrer anselm
clavé 59
Granollers

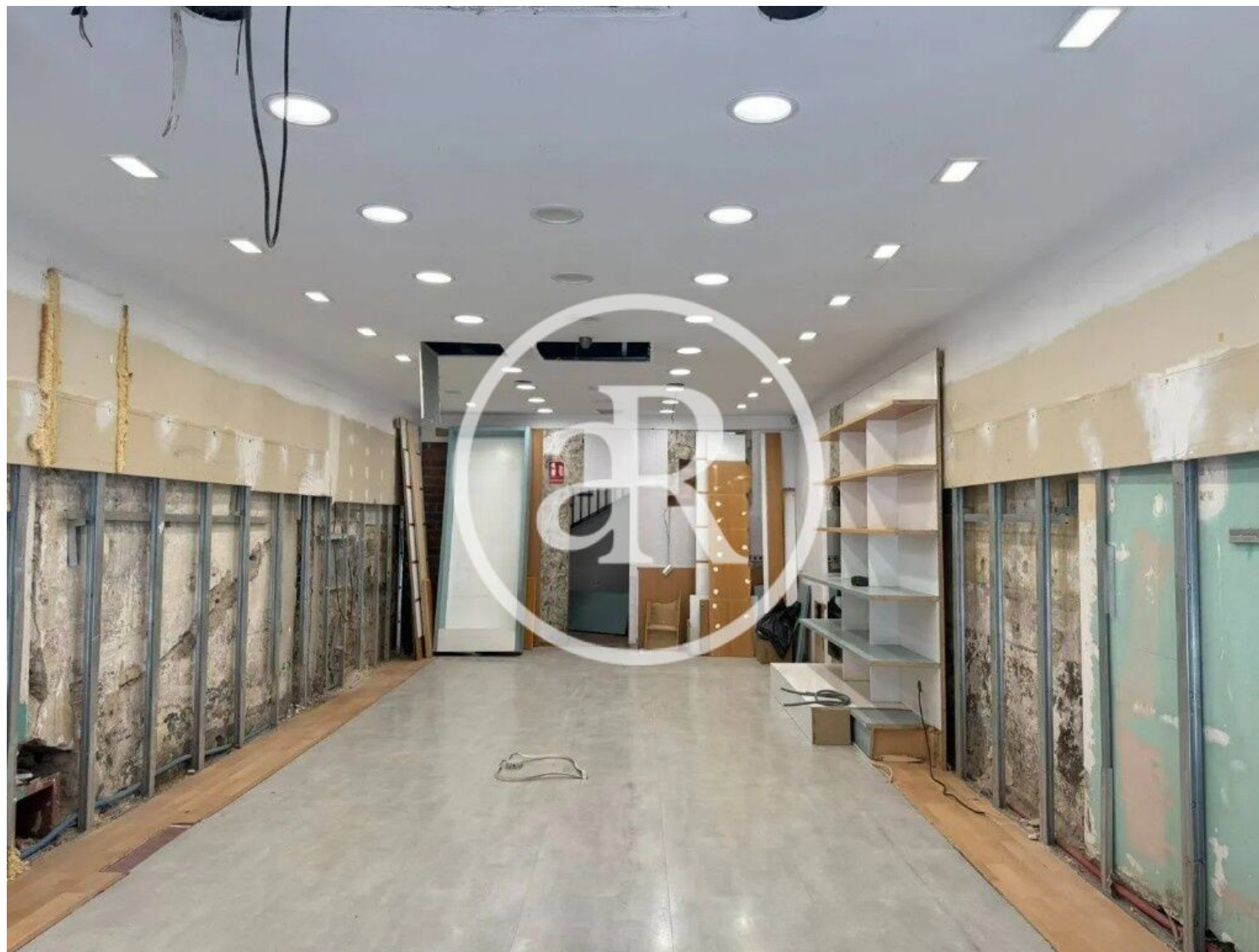
PROPERTY | PICTURES



carrer anselm
clavé 59

Granollers

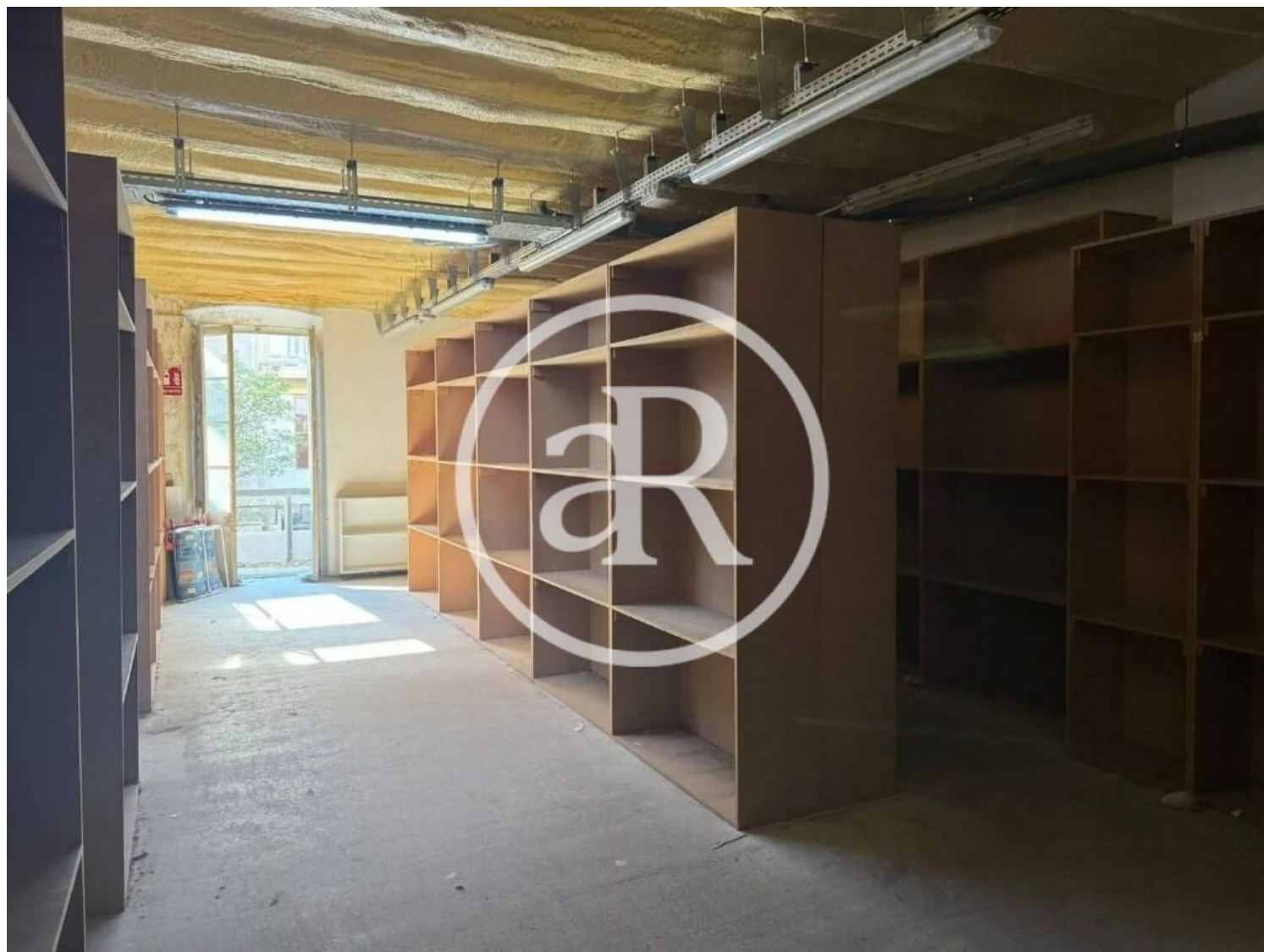
PROPERTY | PICTURES



**carrer anselm
clavé 59**

Granollers

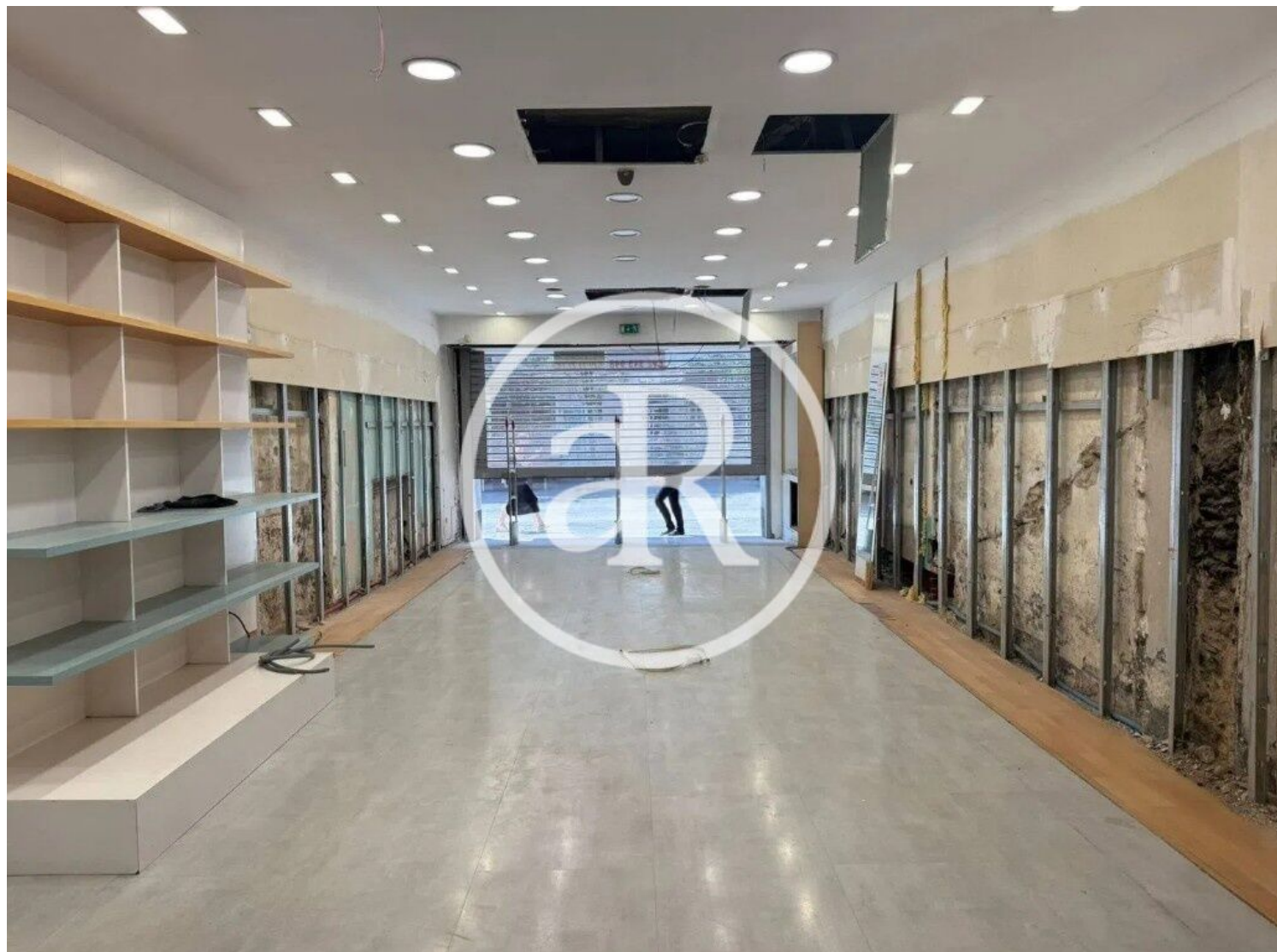
PROPERTY | PICTURES



**carrer anselm
clavé 59**

Granollers

PROPERTY | PICTURES





Passeig de Gràcia, 85, 8^a planta
+34 935 288 909 • 08008 Barcelona

Serrano, 60, 4^a planta
+34 918 005 465 • 28001 Madrid

www.aretail.es

This information has been prepared by ARETAIL, with different information about the market. With the acceptance of this document, the recipient of the same undertakes not to copy, reproduce or distribute this Confidential Document to third parties, neither in its entirety nor in part, without the prior consent of ARETAIL, expressed in writing, as well as to keep permanently confidential all the information contained therein and that is not in the public domain

This Confidential Document has been prepared in order to provide general information about the real estate market. Although the information contained in this document is considered to reflect the true image of it, ARETAIL expressly declines all responsibility for the statements, express or implied, contained in this Confidential Document, for its omissions, or for any other oral or written communications made to any interested party.

Nothing contained in this Confidential Document is a promise or forecast for the future. ARETAIL reserves the right to request the future return of this Document at any time.