



ARETAIL

avinguda diagonal 566

BARCELONA

+34 932 931 905 // +34 918 005 468

www.aretail.es

avinguda diagonal 566

Barcelona



ZONE DESCRIPTION

Retail space on the ground floor with a total of 410 m², located at street level.

The premises are located in Sant Gervasi - Galvany, in one of the most active commercial and office areas in Barcelona, with high pedestrian and road traffic. Therefore, it is an ideal area to start any commercial activity, since it is one of the main hubs of the city.

The property is very well connected by public transport.

Subway: L4, L3, L5

Bus: 34, 47, H10, H8

Train: R2S, S2

If you are looking for a place with a good location, in an area with a lot of traffic, and well connected, do not hesitate and contact us for more information!



PROPERTY DESCRIPTION

CURRENT TENANT	NO TENANT
STORE	SURFACE m ²
Ground floor	210 m ²
Basement	200 m ²
TOTAL	410 m²



ECONOMICS INFORMATION

Asking price	€ 15,000 + taxes
Professional Fees	15% of the annual rent or the average of the escalation + taxes



**avinguda
diagonal 566**

Barcelona

PROPERTY | PICTURES



avinguda
diagonal 566
Barcelona

PROPERTY | PICTURES



**avinguda
diagonal 566**

Barcelona

PROPERTY | PICTURES



avinguda
diagonal 566
Barcelona

PROPERTY | PICTURES



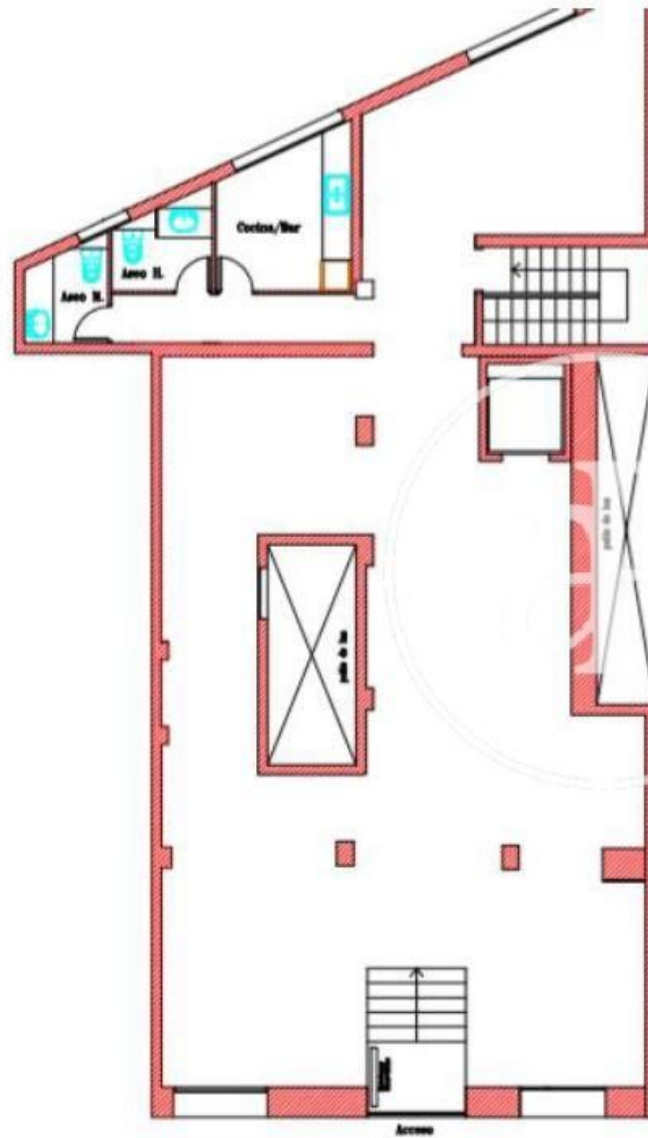
avinguda
diagonal 566
Barcelona

PROPERTY | PICTURES

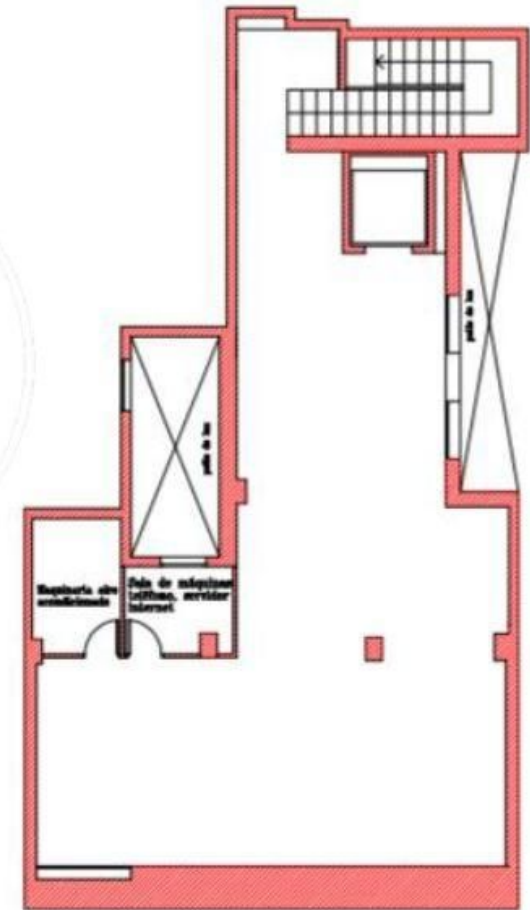


avinguda
diagonal 566
Barcelona

PROPERTY | PICTURES



PLANTA BAJA PROYECTO



PLANTA SOTANO PROYECTO



Passeig de Gràcia, 85, 8^a planta
+34 935 288 909 • 08008 Barcelona

Serrano, 60, 4^a planta
+34 918 005 465 • 28001 Madrid

www.aretail.es

This information has been prepared by ARETAIL, with different information about the market. With the acceptance of this document, the recipient of the same undertakes not to copy, reproduce or distribute this Confidential Document to third parties, neither in its entirety nor in part, without the prior consent of ARETAIL, expressed in writing, as well as to keep permanently confidential all the information contained therein and that is not in the public domain

This Confidential Document has been prepared in order to provide general information about the real estate market. Although the information contained in this document is considered to reflect the true image of it, ARETAIL expressly declines all responsibility for the statements, express or implied, contained in this Confidential Document, for its omissions, or for any other oral or written communications made to any interested party.

Nothing contained in this Confidential Document is a promise or forecast for the future. ARETAIL reserves the right to request the future return of this Document at any time.