



plaça sagrada família 24

---

BARCELONA

+34 932 931 905 // +34 918 005 468

[www.aretail.es](http://www.aretail.es)



# plaça sagrada família 24

Barcelona



## ZONE DESCRIPTION

Premises located in Plaza Sagrada Familia, close to one of the main commercial axes of the city of Barcelona, such as the great monument of La Sagrada Familia, or Av. Diagonal. Commercial premises of a total of 495 m<sup>2</sup>, distributed in a ground floor at street level of 274 m<sup>2</sup> and a first floor of 221 m<sup>2</sup>. Very open plan commercial premises. The property is located in an unbeatable area in one of the most commercial streets of the city. This is a perfect opportunity, the area has a lot of gastronomic and commercial offer and is surrounded by offices, making it a very busy location. Location with easy access to public transport.



## PROPERTY DESCRIPTION

CURRENT TENANT	NO TENANT
STORE	SURFACE m <sup>2</sup>
First floor	221 m <sup>2</sup>
Ground floor	274 m <sup>2</sup>
TOTAL	495 m <sup>2</sup>



## ECONOMICS INFORMATION

Asking price	€ 15,000 + taxes
Professional Fees	15% of the annual rent or the average of the escalation + taxes



plaça sagrada  
família 24

Barcelona

PROPERTY | PICTURES





plaça sagrada  
família 24

Barcelona

PROPERTY | PICTURES





plaça sagrada  
família 24

Barcelona

PROPERTY | PICTURES





plaça sagrada  
família 24

Barcelona

PROPERTY | PICTURES





plaça sagrada  
família 24

Barcelona

PROPERTY | PICTURES





plaça sagrada  
família 24

Barcelona

PROPERTY | PICTURES





plaça sagrada  
família 24

Barcelona

PROPERTY | PICTURES

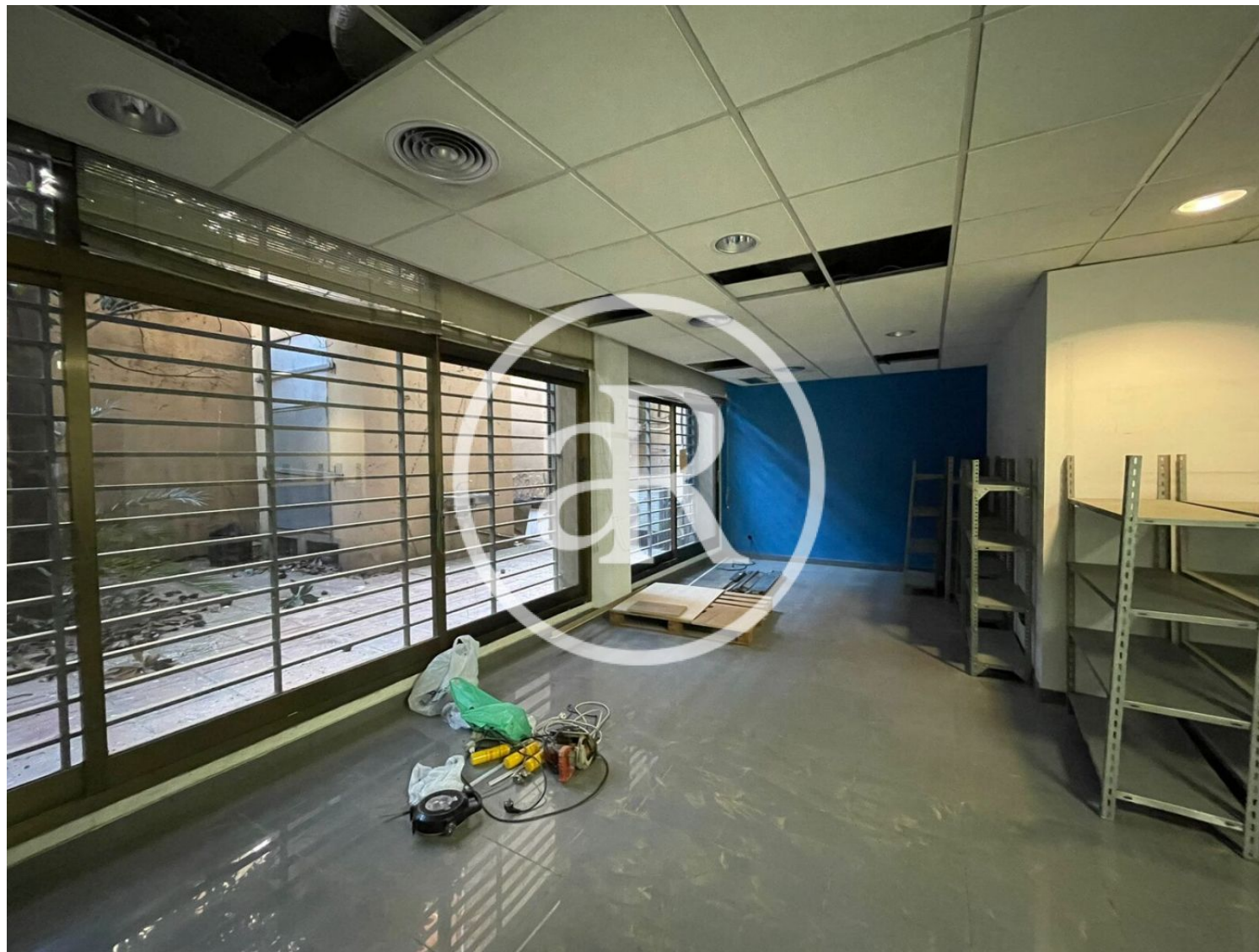




plaça sagrada  
família 24

Barcelona

PROPERTY | PICTURES







Passeig de Gràcia, 85, 8<sup>a</sup> planta  
+34 935 288 909 • 08008 Barcelona

Serrano, 60, 4<sup>a</sup> planta  
+34 918 005 465 • 28001 Madrid

[www.aretail.es](http://www.aretail.es)

This information has been prepared by ARETAIL, with different information about the market. With the acceptance of this document, the recipient of the same undertakes not to copy, reproduce or distribute this Confidential Document to third parties, neither in its entirety nor in part, without the prior consent of ARETAIL, expressed in writing, as well as to keep permanently confidential all the information contained therein and that is not in the public domain

This Confidential Document has been prepared in order to provide general information about the real estate market. Although the information contained in this document is considered to reflect the true image of it, ARETAIL expressly declines all responsibility for the statements, express or implied, contained in this Confidential Document, for its omissions, or for any other oral or written communications made to any interested party.

Nothing contained in this Confidential Document is a promise or forecast for the future. ARETAIL reserves the right to request the future return of this Document at any time.