



via laietana 36

BARCELONA

+34 932 931 905 // +34 918 005 468

[www.aretail.es](http://www.aretail.es)



via laietana 36

Barcelona



**ZONE DESCRIPTION**

Premises located in Via Laietana, one of the main commercial axes of the city of Barcelona. Surrounded by numerous well-known retailers and located in an area with a lot of pedestrian and vehicular traffic. In the heart of the Gothic Quarter, just a few metres from Barcelona Cathedral and Plaza Catalunya. It is an area that is in constant pedestrian movement. Commercial premises of a total of 480 sq m, distributed in a ground floor of 230 sq m and a basement of 250 sq m. Location with easy access to public transport.  
Metro: L1, L4, L3, L2.  
Train: R1, R2N, R3, R4, R7.  
Bus: 54, 59, 67, B20, N8.  
Do not hesitate to contact us for more information.



**PROPERTY DESCRIPTION**

CURRENT TENANT	NO TENANT
STORE	SURFACE m <sup>2</sup>
Ground floor	230 m <sup>2</sup>
Basement	250 m <sup>2</sup>
TOTAL	480 m <sup>2</sup>



**ECONOMICS INFORMATION**

Asking price	€ 15,000 + taxes
Professional Fees	15% of the annual rent or the average of the escalation + taxes



via laietana 36

Barcelona

PROPERTY | PICTURES





via laietana 36

Barcelona

PROPERTY | PICTURES





via laietana 36

Barcelona

PROPERTY | PICTURES





via laietana 36

Barcelona

PROPERTY | PICTURES

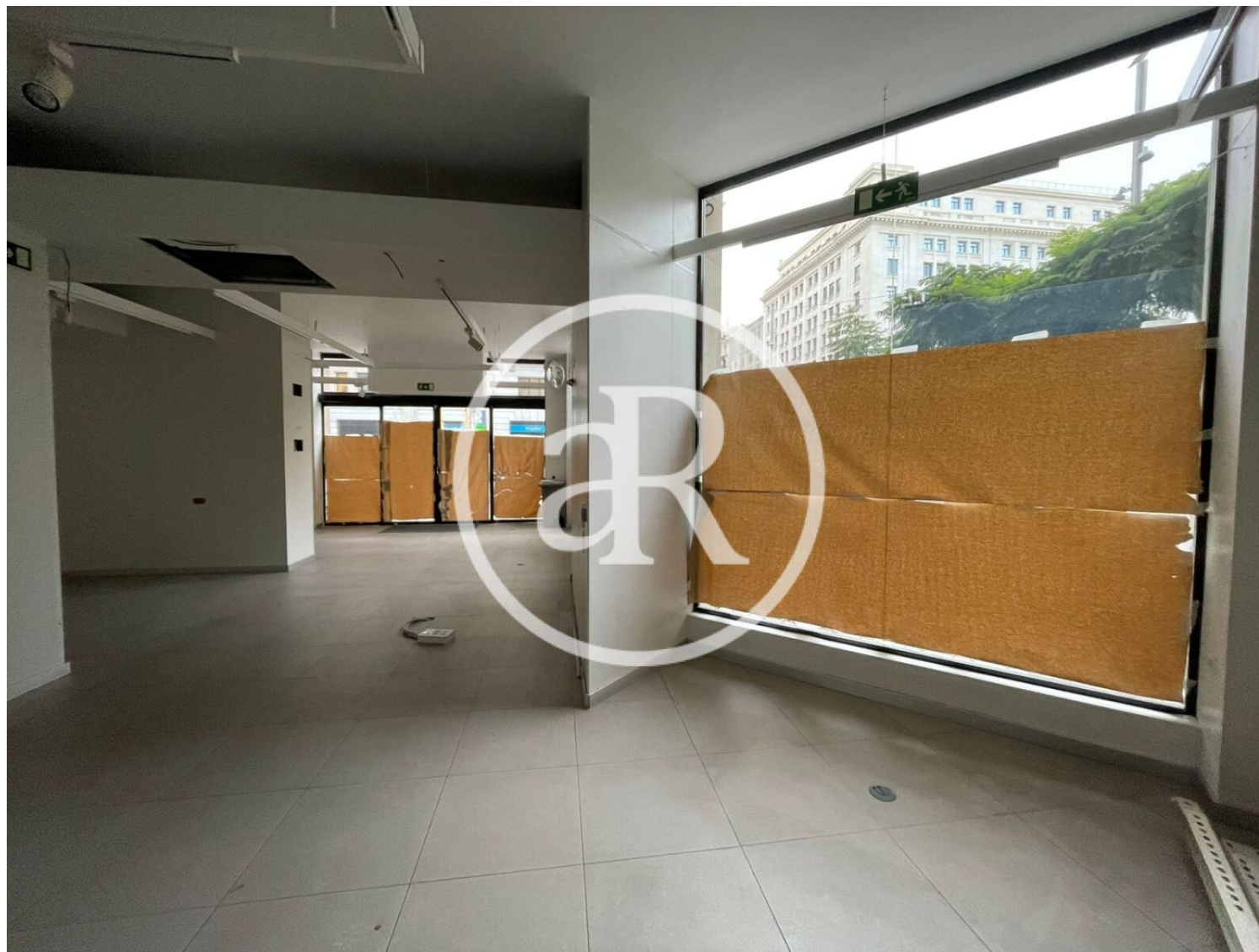




**via laietana 36**

Barcelona

**PROPERTY | PICTURES**





**via laietana 36**

Barcelona

**PROPERTY | PICTURES**

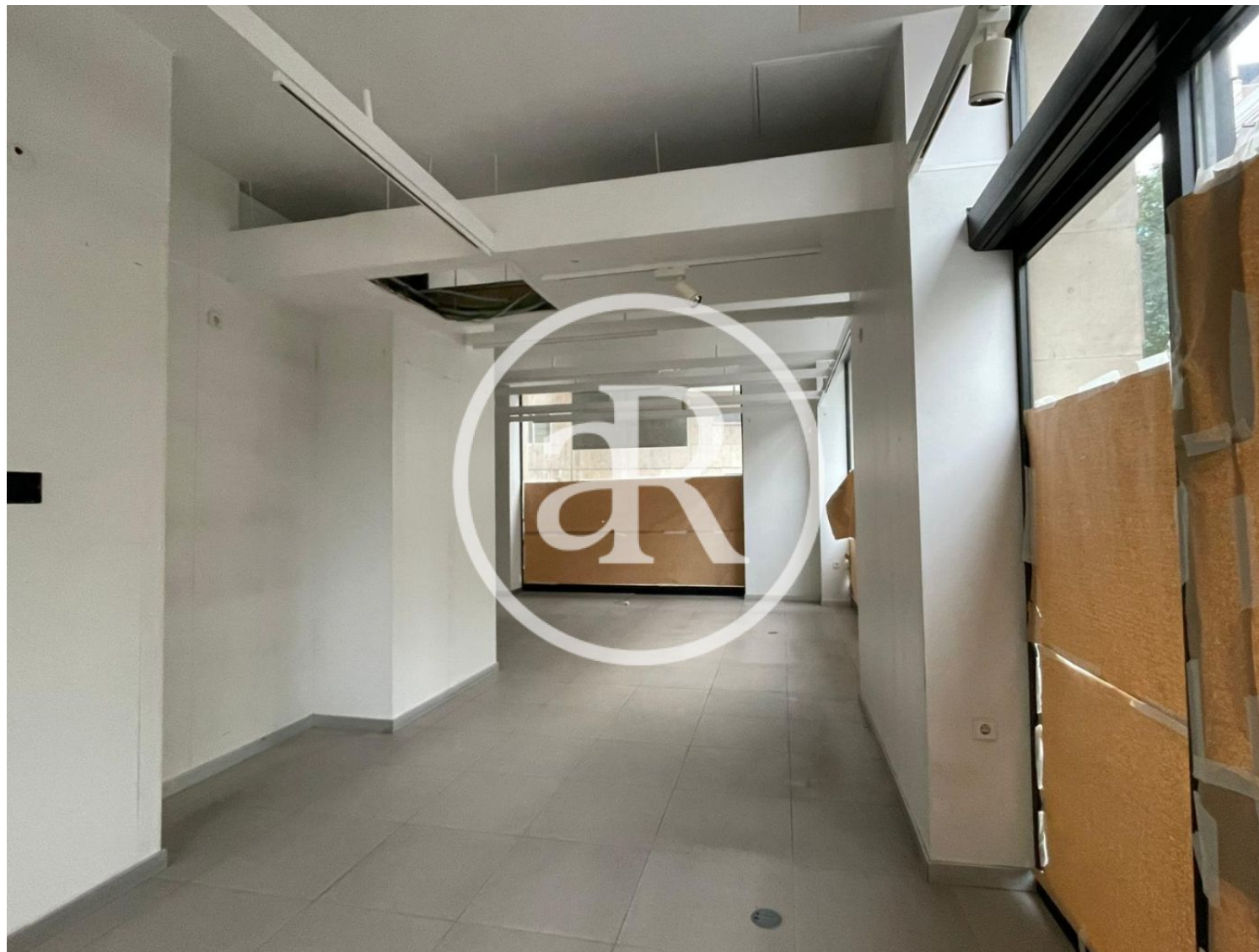




**via laietana 36**

Barcelona

**PROPERTY | PICTURES**





**via laietana 36**

Barcelona

**PROPERTY | PICTURES**







Passeig de Gràcia, 85, 8<sup>a</sup> planta  
+34 935 288 909 • 08008 Barcelona

Serrano, 60, 4<sup>a</sup> planta  
+34 918 005 465 • 28001 Madrid

[www.aretail.es](http://www.aretail.es)

This information has been prepared by ARETAIL, with different information about the market. With the acceptance of this document, the recipient of the same undertakes not to copy, reproduce or distribute this Confidential Document to third parties, neither in its entirety nor in part, without the prior consent of ARETAIL, expressed in writing, as well as to keep permanently confidential all the information contained therein and that is not in the public domain

This Confidential Document has been prepared in order to provide general information about the real estate market. Although the information contained in this document is considered to reflect the true image of it, ARETAIL expressly declines all responsibility for the statements, express or implied, contained in this Confidential Document, for its omissions, or for any other oral or written communications made to any interested party.

Nothing contained in this Confidential Document is a promise or forecast for the future. ARETAIL reserves the right to request the future return of this Document at any time.