



ARETAIL

carrer ample 13

BARCELONA

+34 932 931 905 // +34 918 005 468

www.aretail.es

carrer ample
13
Barcelona



ZONE DESCRIPTION

Premises located in Ample street, close to one of the main commercial axes of the city of Barcelona, La Rambla or Via Laietana.

Commercial premises of a total of 418 m², distributed in a ground floor at street level of 271 m² and a mezzanine of 147 m². Corner commercial premises, with large windows and very open plan.

The property is located in an unbeatable area, as it is very close to La Rambla de Barcelona and Pg. de Colon, one of the most commercial streets of the city. It is a perfect opportunity, the area has a lot of gastronomic and commercial offer and is surrounded by offices, making it a very busy location.

Location with easy access to public transport.



PROPERTY DESCRIPTION

CURRENT TENANT	NO TENANT
STORE	SURFACE m ²
Ground floor	271 m ²
Other surfaces	147 m ²
TOTAL	418 m ²



ECONOMICS INFORMATION

Asking price	€ 9,501 + taxes
Professional Fees	15% of the annual rent or the average of the escalation + taxes



carrer ample
13

Barcelona

PROPERTY | PICTURES



carrer ample
13

Barcelona

PROPERTY | PICTURES



carrer ample
13

Barcelona

PROPERTY | PICTURES



carrer ample
13

Barcelona

PROPERTY | PICTURES



carrer ample
13

Barcelona

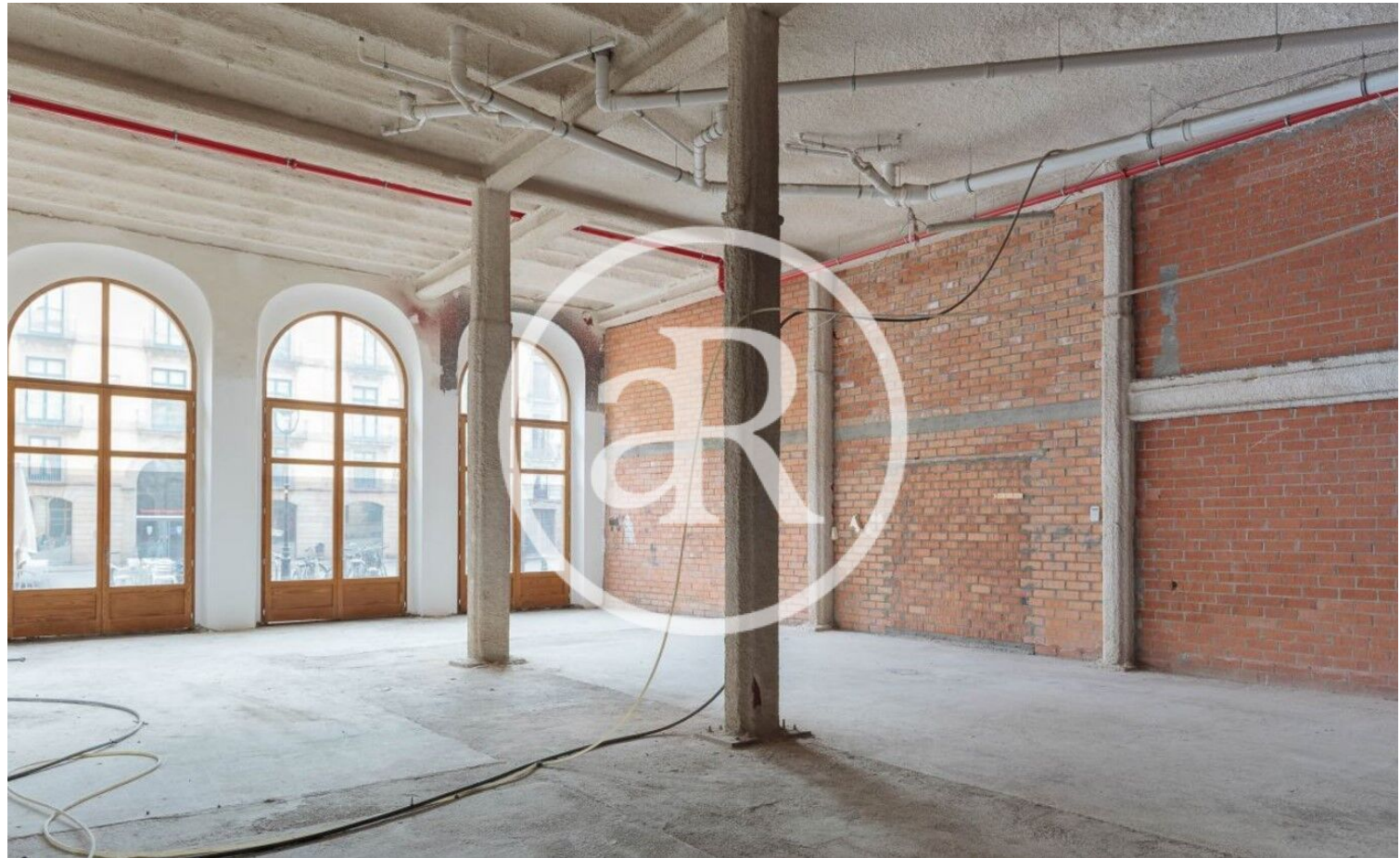
PROPERTY | PICTURES



carrer ample
13

Barcelona

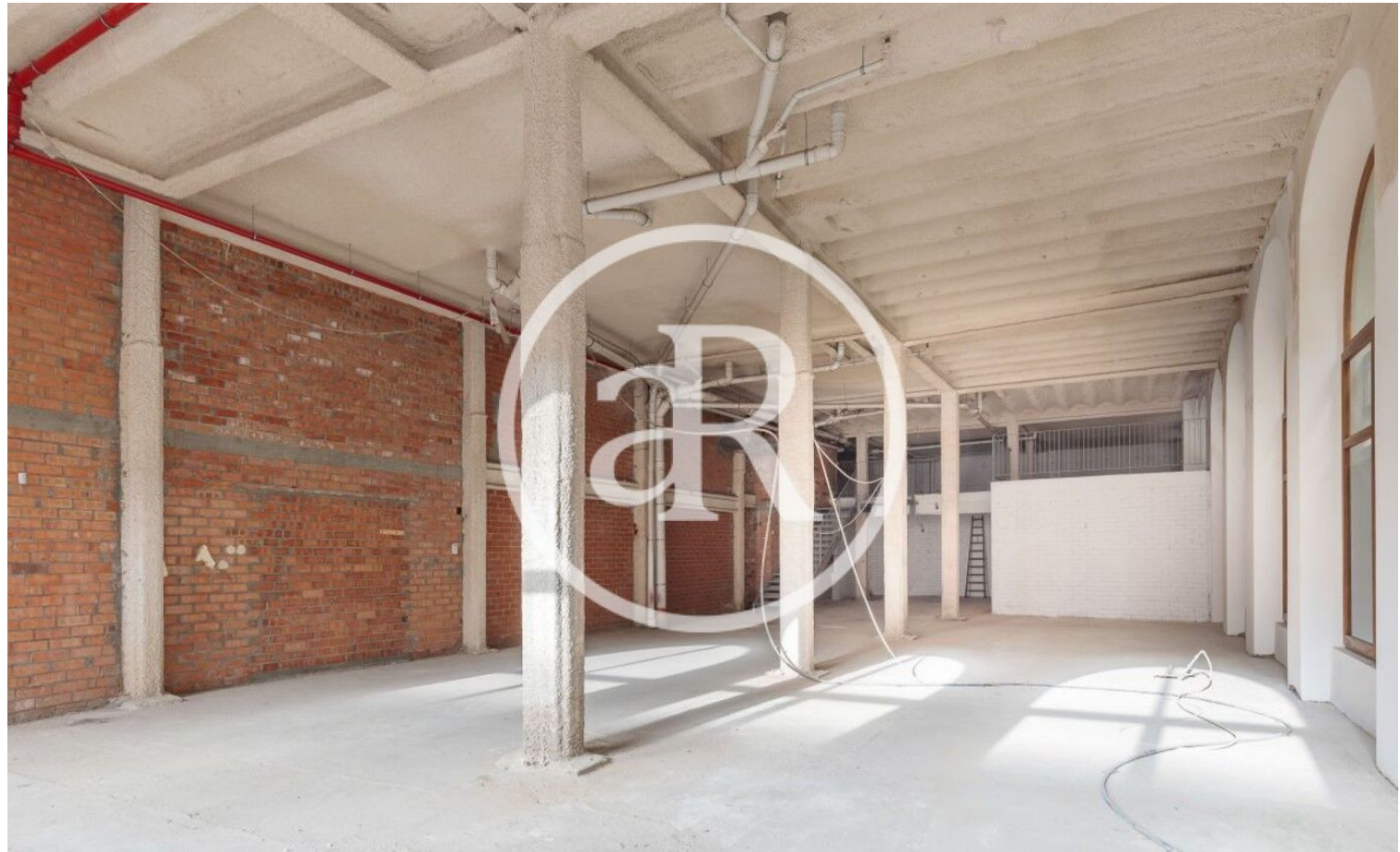
PROPERTY | PICTURES



carrer ample
13

Barcelona

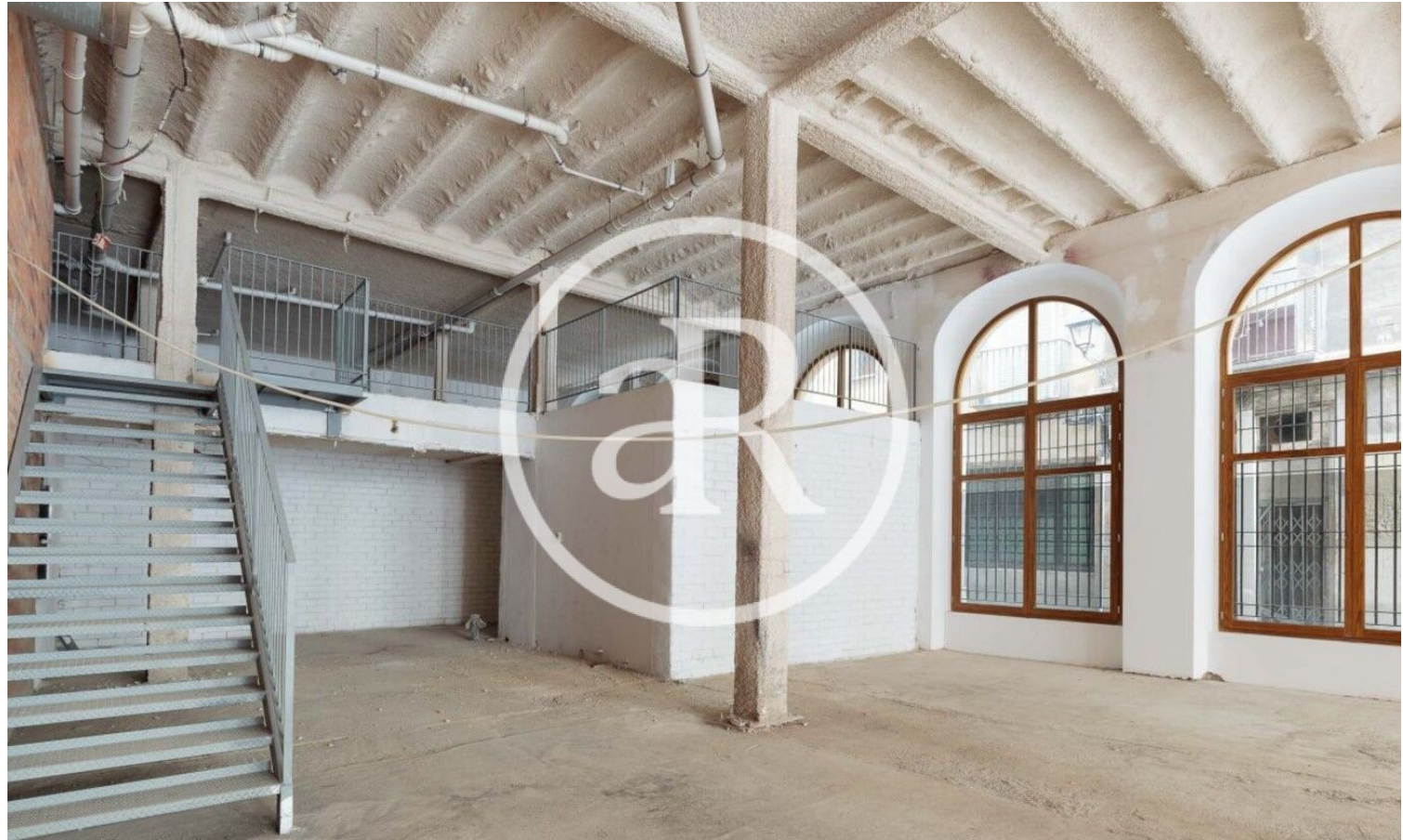
PROPERTY | PICTURES



carrer ample
13

Barcelona

PROPERTY | PICTURES





Passeig de Gràcia, 85, 8^a planta
+34 935 288 909 • 08008 Barcelona

Serrano, 60, 4^a planta
+34 918 005 465 • 28001 Madrid

www.aretail.es

This information has been prepared by ARETAIL, with different information about the market. With the acceptance of this document, the recipient of the same undertakes not to copy, reproduce or distribute this Confidential Document to third parties, neither in its entirety nor in part, without the prior consent of ARETAIL, expressed in writing, as well as to keep permanently confidential all the information contained therein and that is not in the public domain

This Confidential Document has been prepared in order to provide general information about the real estate market. Although the information contained in this document is considered to reflect the true image of it, ARETAIL expressly declines all responsibility for the statements, express or implied, contained in this Confidential Document, for its omissions, or for any other oral or written communications made to any interested party.

Nothing contained in this Confidential Document is a promise or forecast for the future. ARETAIL reserves the right to request the future return of this Document at any time.