



ARETAIL

santa anna 10

---

BARCELONA

+34 932 931 905 // +34 918 005 468

[www.aretail.es](http://www.aretail.es)



# santa anna 10

Barcelona



## ZONE DESCRIPTION

Great opportunity, retail space located at street level in a tourist area!

Commercial premises of a total of 140m<sup>2</sup> distributed on a ground floor at street level and located on the corner.

Located in a very central area of the city of Barcelona, it is one of the transverse axes, crossing between Portal de l'Àngel and Las Ramblas. Very close to Plaza Catalunya, an area with a large influx of people and which has a large volume of tourism.

It is in a very well connected area to access by public transport.

Subway: L1  
Train: R1, R3, R7, RG1, S1  
Bus: 59, B20, B25, L95, V17

Do not hesitate to contact us for more information!



## PROPERTY DESCRIPTION

| CURRENT TENANT | NO TENANT              |
|----------------|------------------------|
| STORE          | SURFACE m <sup>2</sup> |
| Ground floor   | 140 m <sup>2</sup>     |
| TOTAL          | 140 m <sup>2</sup>     |



## ECONOMICS INFORMATION

|                   |   |
|-------------------|---|
| Asking price      | € 7,500 + taxes   |
| Professional Fees | 15% of the annual rent or the average of the escalation + taxes |



santa anna 10  
Barcelona

PROPERTY | PICTURES





santa anna 10

Barcelona

PROPERTY | PICTURES





santa anna 10

Barcelona

PROPERTY | PICTURES



santa anna 10

Barcelona

PROPERTY | PICTURES





santa anna 10  
Barcelona

PROPERTY | PICTURES



santa anna 10

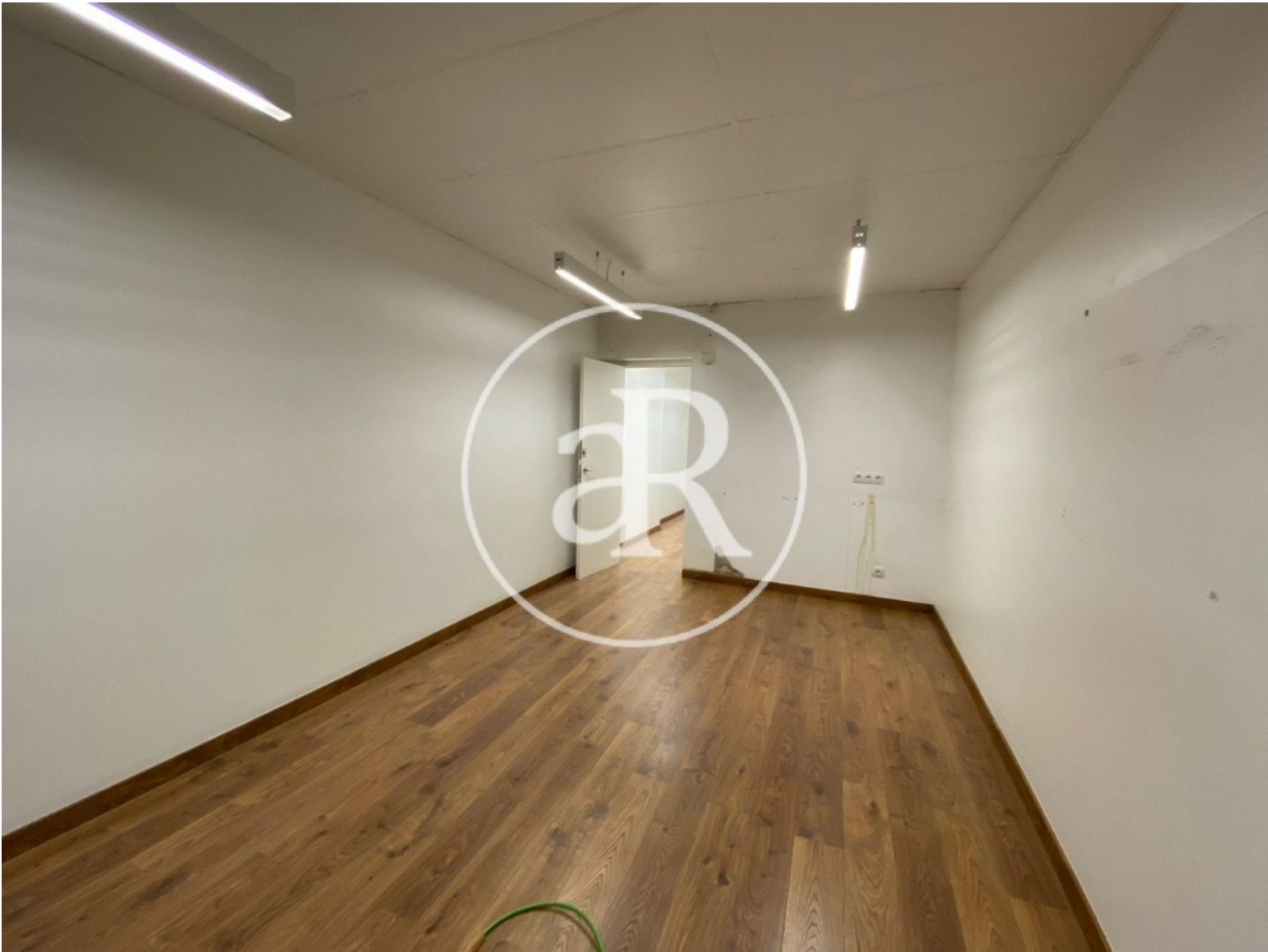
Barcelona

PROPERTY | PICTURES













Passeig de Gràcia, 85, 8<sup>a</sup> planta  
+34 935 288 909 • 08008 Barcelona

Serrano, 60, 4<sup>a</sup> planta  
+34 918 005 465 • 28001 Madrid

[www.aretail.es](http://www.aretail.es)

This information has been prepared by ARETAIL, with different information about the market. With the acceptance of this document, the recipient of the same undertakes not to copy, reproduce or distribute this Confidential Document to third parties, neither in its entirety nor in part, without the prior consent of ARETAIL, expressed in writing, as well as to keep permanently confidential all the information contained therein and that is not in the public domain

This Confidential Document has been prepared in order to provide general information about the real estate market. Although the information contained in this document is considered to reflect the true image of it, ARETAIL expressly declines all responsibility for the statements, express or implied, contained in this Confidential Document, for its omissions, or for any other oral or written communications made to any interested party.

Nothing contained in this Confidential Document is a promise or forecast for the future. ARETAIL reserves the right to request the future return of this Document at any time.