



ARETAIL

c/ de provença 84-86

---

BARCELONA

+34 932 931 905 // +34 918 005 468

[www.aretail.es](http://www.aretail.es)



c/ de  
provença  
84-86

Barcelona



## ZONE DESCRIPTION

Commercial premises at street level, with a total of 350 sqm, distributed in a ground floor with large facade.

The premises are located in the Eixample Esquerra, very close to Sants Estació and a few meters away from Av. de Roma and Av. de Josep Tarradellas, so it is an area with a high volume of pedestrian and vehicular traffic, as well as a high commercial volume.

The location has very good public transport connections:

Metro: L2, L3, L5.

Train: R2N, R2S, S6

Bus: 24, 33, 34, 34, 67, B24, H10, H8

If you are looking for a local with good location and good communication, do not hesitate and contact us for more information!



## PROPERTY DESCRIPTION

CURRENT TENANT	NO TENANT
STORE	SURFACE m <sup>2</sup>
Ground floor	350 m <sup>2</sup>
TOTAL	350 m <sup>2</sup>



## ECONOMICS INFORMATION

Asking price	€ 5,250 + taxes
Professional Fees	15% of the annual rent or the average of the escalation + taxes





c/ de  
provença  
84-86

Barcelona

PROPERTY | PICTURES



c/ de  
provença  
84-86  
Barcelona

PROPERTY | PICTURES



c/ de  
provença  
84-86

Barcelona

PROPERTY | PICTURES





c/ de  
provença  
84-86

Barcelona

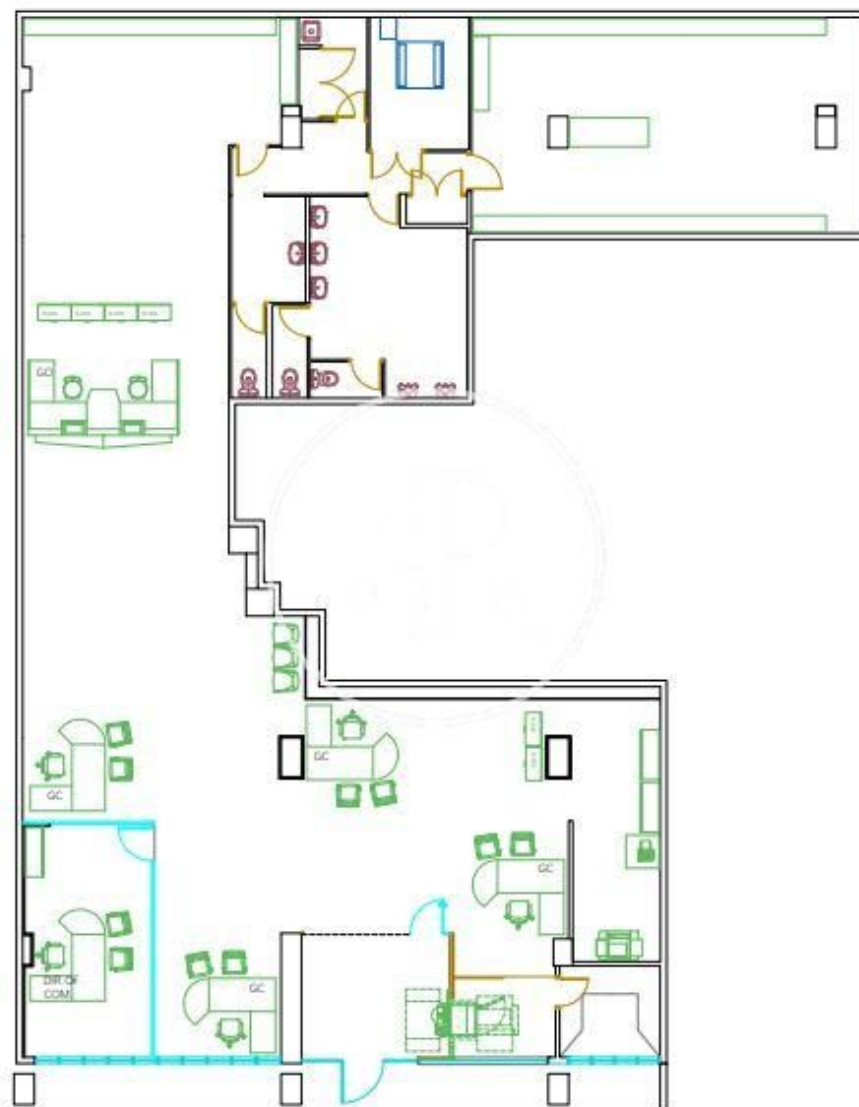
PROPERTY | PICTURES



c/ de  
provença  
84-86

Barcelona

PROPERTY | PICTURES



c/ de  
provença  
84-86

Barcelona

PROPERTY | PICTURES

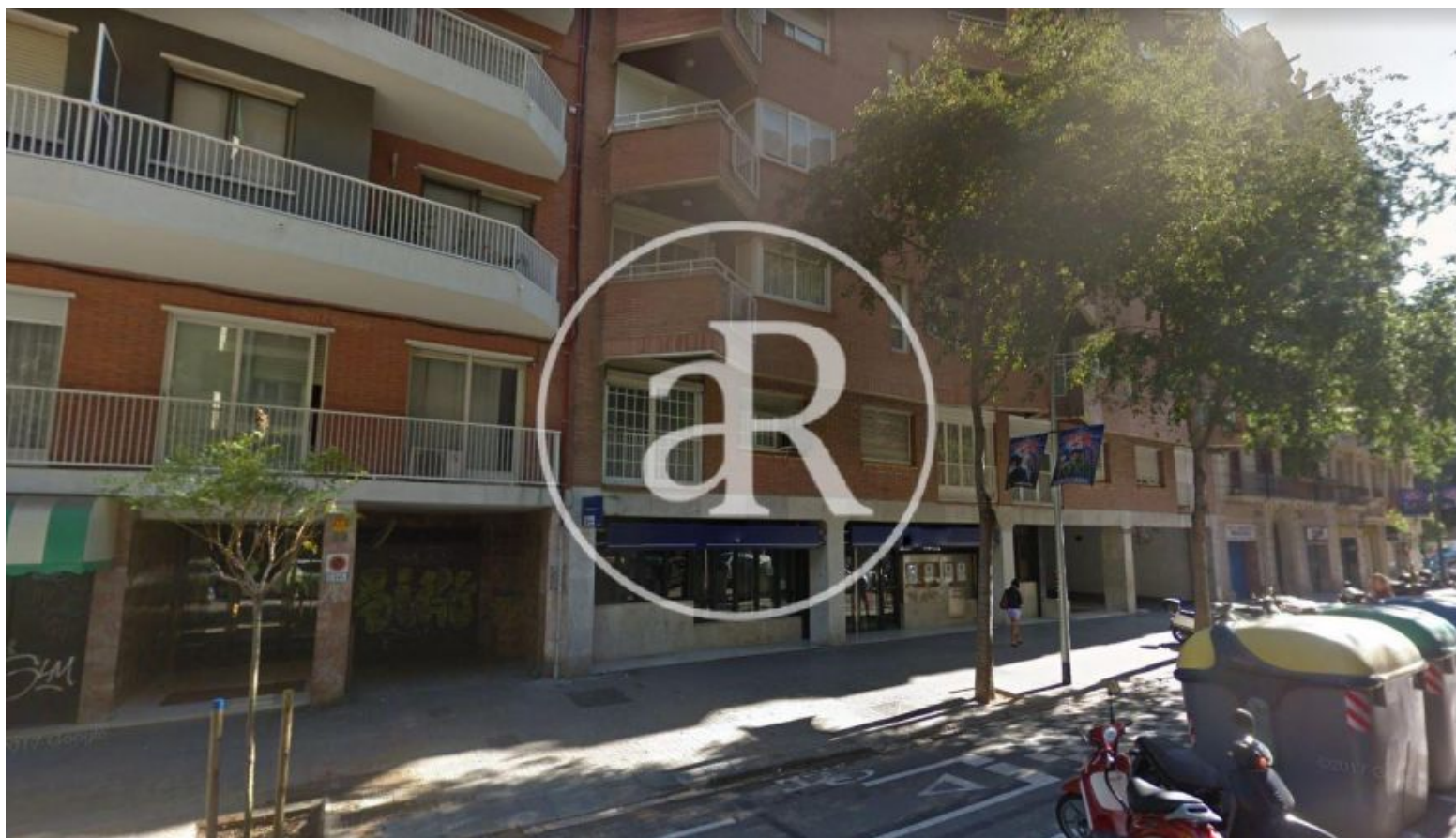




c/ de  
provença  
84-86

Barcelona

PROPERTY | PICTURES



c/ de  
provença  
84-86

Barcelona

PROPERTY | PICTURES







Passeig de Gràcia, 85, 8<sup>a</sup> planta  
+34 935 288 909 • 08008 Barcelona

Serrano, 60, 4<sup>a</sup> planta  
+34 918 005 465 • 28001 Madrid

[www.aretail.es](http://www.aretail.es)

This information has been prepared by ARETAIL, with different information about the market. With the acceptance of this document, the recipient of the same undertakes not to copy, reproduce or distribute this Confidential Document to third parties, neither in its entirety nor in part, without the prior consent of ARETAIL, expressed in writing, as well as to keep permanently confidential all the information contained therein and that is not in the public domain

This Confidential Document has been prepared in order to provide general information about the real estate market. Although the information contained in this document is considered to reflect the true image of it, ARETAIL expressly declines all responsibility for the statements, express or implied, contained in this Confidential Document, for its omissions, or for any other oral or written communications made to any interested party.

Nothing contained in this Confidential Document is a promise or forecast for the future. ARETAIL reserves the right to request the future return of this Document at any time.