



carrer d'ausiàs marc 65

BARCELONA

+34 932 931 905 // +34 918 005 468

www.aretail.es

carrer d'ausiàs
marc 65
Barcelona

ZONE DESCRIPTION

Commercial premises located in Ausiàs Marc street, one of the most important commercial axes of the city of Barcelona. It is located next to tourist monuments such as Plaza Tetuán, Arc de Triomf and very close to the North bus station. Surrounded by numerous well-known retailers and situated in an area with a lot of pedestrian and vehicular traffic. Premises with a total of 330 m², distributed in a ground floor at street level. It is a commercial premises with very good visibility and very open plan. Very well communicated by public transport:
Metro: L1, L3, L4, L2.
Train: R4, R1, R3, RG1, L1.
Bus: 67, 7, B20, B24, H16.
Do not hesitate to contact us for more information.



PROPERTY DESCRIPTION

CURRENT TENANT	NO TENANT
STORE	SURFACE m²
Ground floor	330 m²
TOTAL	330 m²

ECONOMICS INFORMATION

Asking price	€ 4,500 + taxes
Professional Fees	15% of the annual rent or the average of the escalation + taxes



carrer d'ausiàs
marc 65
Barcelona

PROPERTY | PICTURES



carrer d'ausiàs
marc 65
Barcelona

PROPERTY | PICTURES



carrer d'ausiàs
marc 65
Barcelona

PROPERTY | PICTURES



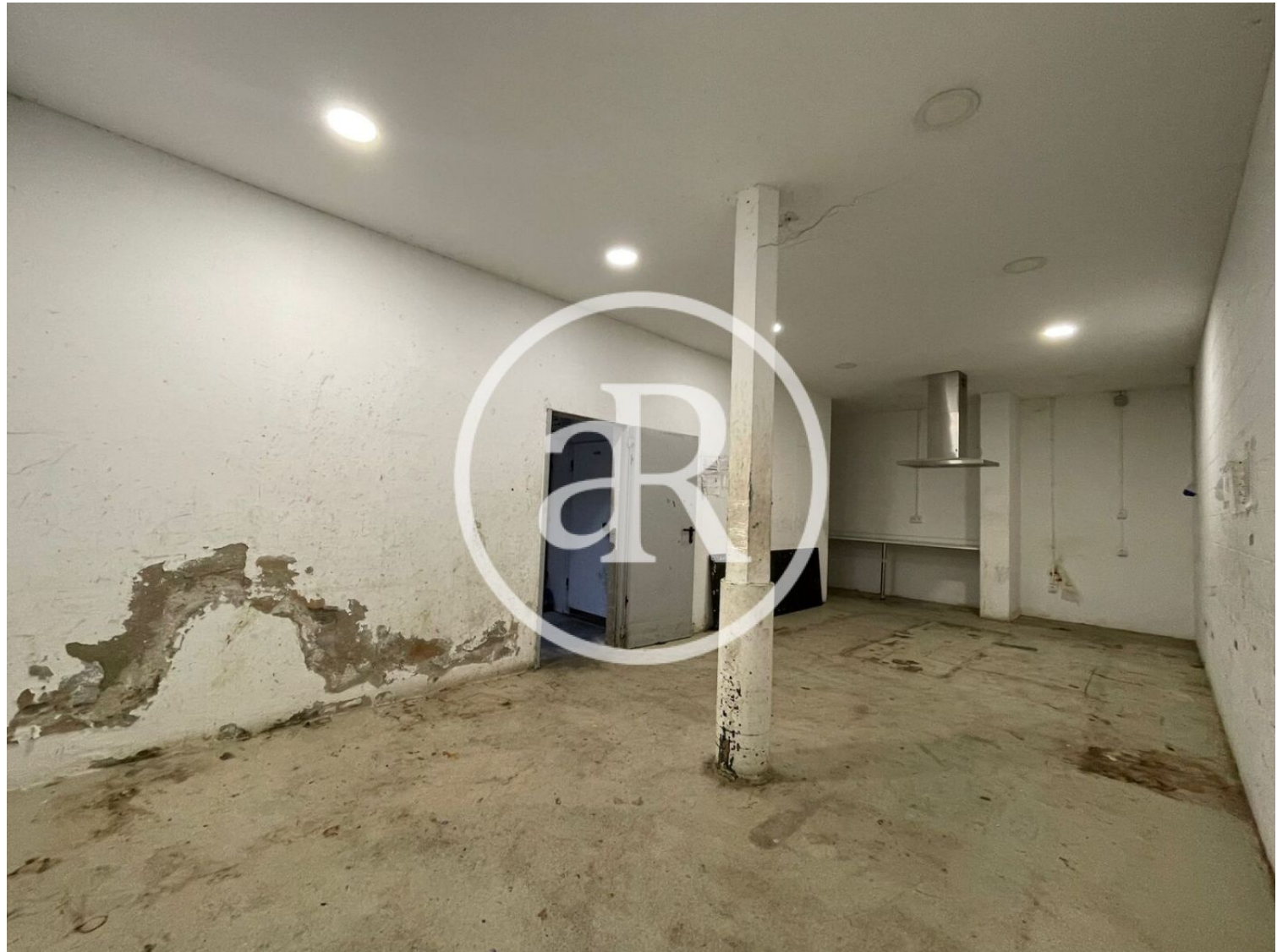
carrer d'ausiàs
marc 65
Barcelona

PROPERTY | PICTURES



carrer d'ausiàs
marc 65
Barcelona

PROPERTY | PICTURES



carrer d'ausiàs
marc 65
Barcelona

PROPERTY | PICTURES



carrer d'ausiàs
marc 65
Barcelona

PROPERTY | PICTURES



carrer d'ausiàs
marc 65
Barcelona

PROPERTY | PICTURES





Passeig de Gràcia, 85, 8^a planta
+34 935 288 909 • 08008 Barcelona

Serrano, 60, 4^a planta
+34 918 005 465 • 28001 Madrid

www.aretail.es

This information has been prepared by ARETAIL, with different information about the market. With the acceptance of this document, the recipient of the same undertakes not to copy, reproduce or distribute this Confidential Document to third parties, neither in its entirety nor in part, without the prior consent of ARETAIL, expressed in writing, as well as to keep permanently confidential all the information contained therein and that is not in the public domain

This Confidential Document has been prepared in order to provide general information about the real estate market. Although the information contained in this document is considered to reflect the true image of it, ARETAIL expressly declines all responsibility for the statements, express or implied, contained in this Confidential Document, for its omissions, or for any other oral or written communications made to any interested party.

Nothing contained in this Confidential Document is a promise or forecast for the future. ARETAIL reserves the right to request the future return of this Document at any time.