



ARETAIL

c. de pelai 52

BARCELONA

+34 932 931 905 // +34 918 005 468

[www.aretail.es](http://www.aretail.es)



## c. de pelai 52

Barcelona



### ZONE DESCRIPTION

Commercial premises located very close to Plaza Catalunya, Gran Vía and Plaza Universitat, where the most important pedestrian and tourist areas of Barcelona are located.

It is a commercial premises with a total of 562 sqm, distributed in a first floor of 216 sqm, a ground floor of 200 sqm, a basement of 66 sqm and a terrace of 80 sqm.

The IBI and the community fees of this property are paid by the tenant.

It is also very well connected by public transport.

Underground: L1, L2, L5

Train: R11, R4

Bus: 54, D10, H10, H8, L62

If you are interested in the property or need more information, do not hesitate to contact us!



### PROPERTY DESCRIPTION

CURRENT TENANT	NO TENANT
STORE	SURFACE m <sup>2</sup>
First floor	216 m <sup>2</sup>
Ground floor	200 m <sup>2</sup>
Basement	66 m <sup>2</sup>
Other surfaces	80 m <sup>2</sup>
<b>TOTAL</b>	<b>562 m<sup>2</sup></b>



### ECONOMICS INFORMATION

Asking price	€ 29,000 + taxes
Professional Fees	15% of the annual rent or the average of the escalation + taxes



c. de pelai 52

Barcelona

PROPERTY | PICTURES



c. de pelai 52

Barcelona

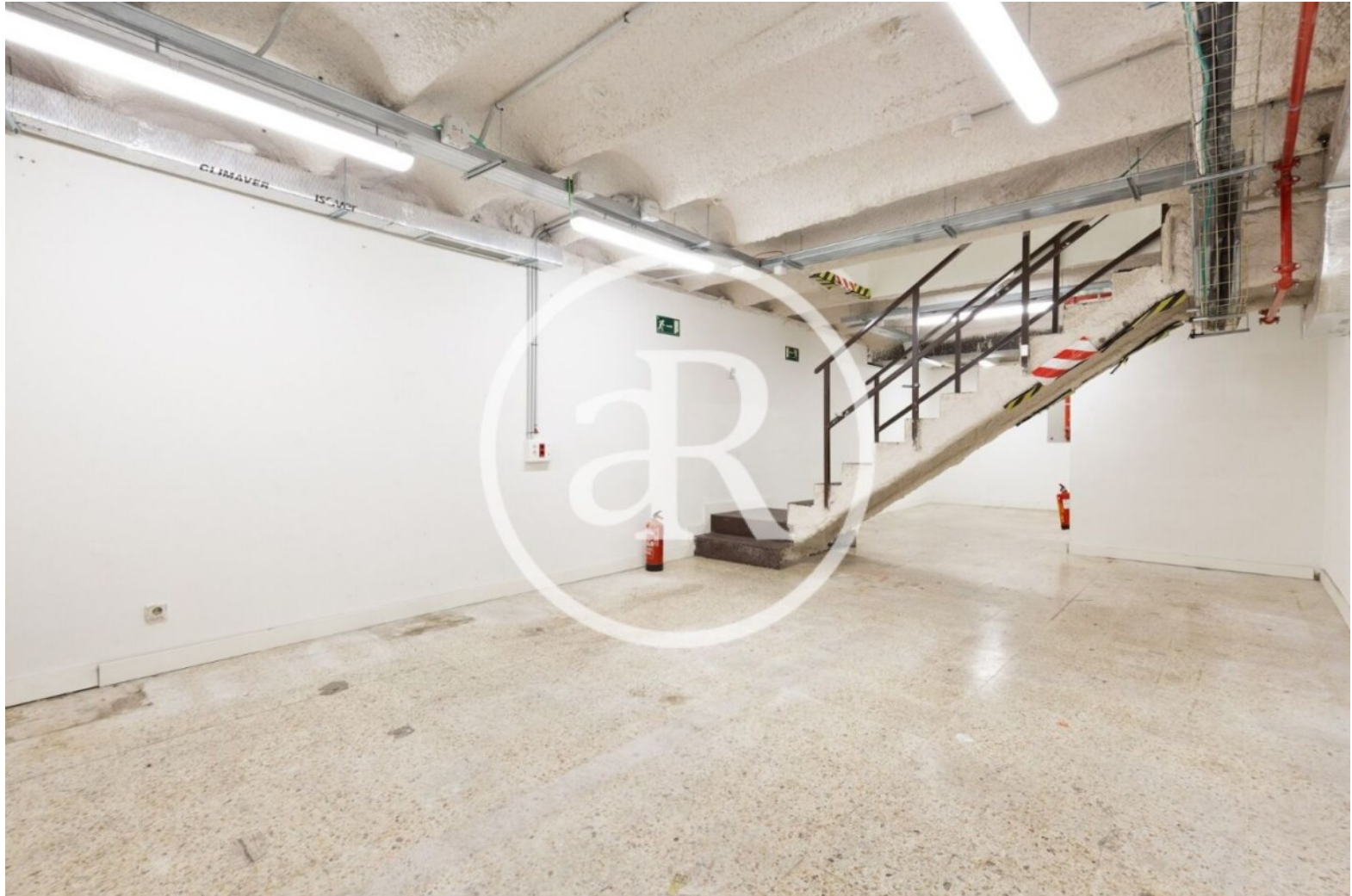
PROPERTY | PICTURES



c. de pelai 52

Barcelona

PROPERTY | PICTURES





c. de pelai 52

Barcelona

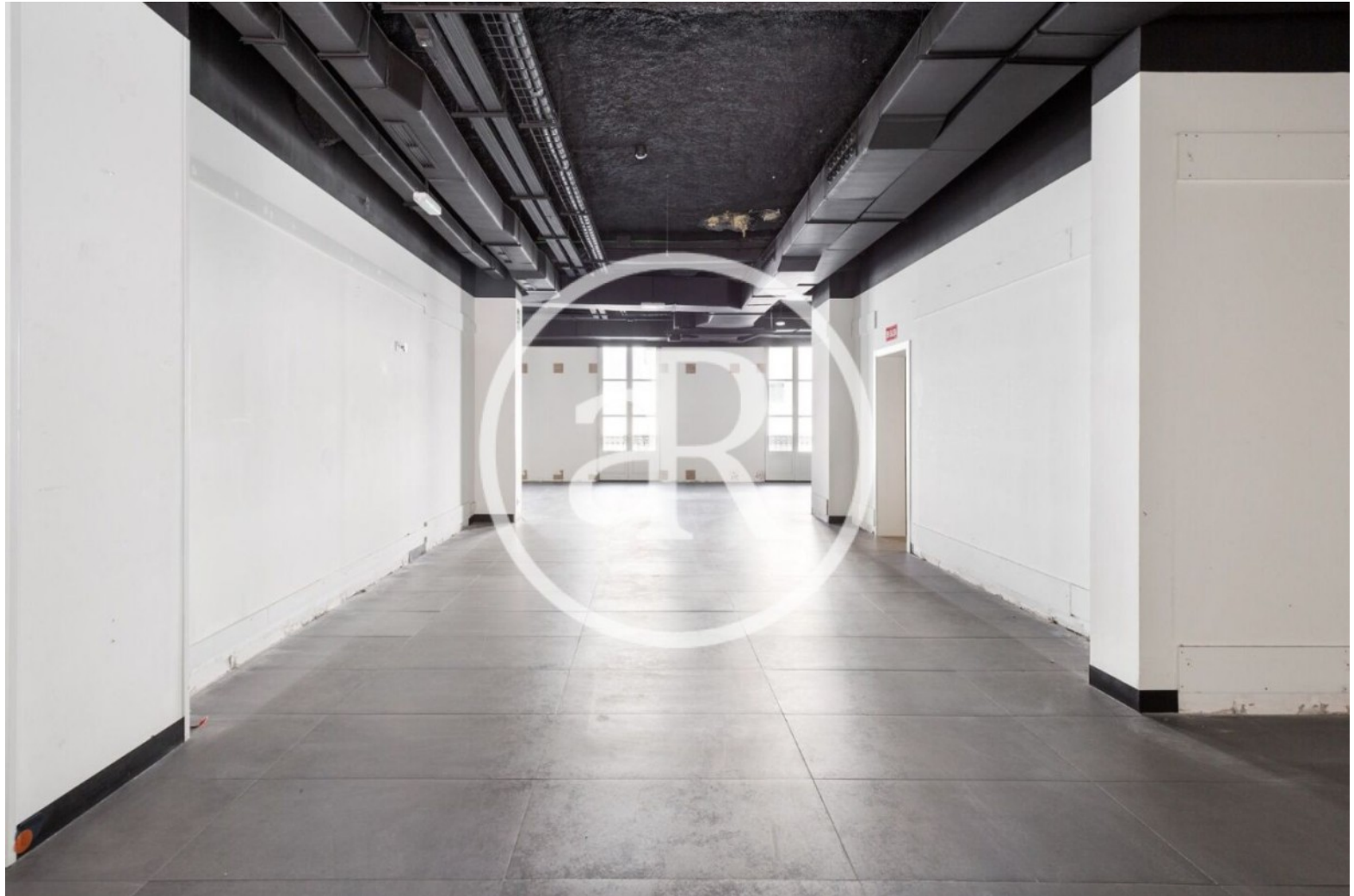
PROPERTY | PICTURES



c. de pelai 52

Barcelona

PROPERTY | PICTURES



c. de pelai 52

Barcelona

PROPERTY | PICTURES





c. de pelai 52

Barcelona

PROPERTY | PICTURES



c. de pelai 52

Barcelona

PROPERTY | PICTURES





Passeig de Gràcia, 85, 8<sup>a</sup> planta  
+34 935 288 909 • 08008 Barcelona

Serrano, 60, 4<sup>a</sup> planta  
+34 918 005 465 • 28001 Madrid

[www.aretail.es](http://www.aretail.es)

This information has been prepared by ARETAIL, with different information about the market. With the acceptance of this document, the recipient of the same undertakes not to copy, reproduce or distribute this Confidential Document to third parties, neither in its entirety nor in part, without the prior consent of ARETAIL, expressed in writing, as well as to keep permanently confidential all the information contained therein and that is not in the public domain

This Confidential Document has been prepared in order to provide general information about the real estate market. Although the information contained in this document is considered to reflect the true image of it, ARETAIL expressly declines all responsibility for the statements, express or implied, contained in this Confidential Document, for its omissions, or for any other oral or written communications made to any interested party.

Nothing contained in this Confidential Document is a promise or forecast for the future. ARETAIL reserves the right to request the future return of this Document at any time.