



ARETAIL

c/ de la portaferrissa 17

BARCELONA

+34 932 931 905 // +34 918 005 468

www.aretail.es

c/ de la portaferriassa 17 Barcelona



ZONE DESCRIPTION

Retail space on the ground floor with a total of 65 sqm, located at street level and surrounded by numerous shops.

The premises are located in the Gothic Quarter, it is an area where there is a high volume of pedestrian traffic throughout the year, since it is an area close to very touristic points of the city of Barcelona, such as La Rambla, where the Mercat de la Boqueria and Plaza Cataluña are located.

The property is very well connected by public transport.

Subway: L1, L3

Bus: 47, 67, A2, H16, L95, V13

Train: R1, R4, S2

If you are looking for a place with a good location, in an area with a lot of traffic, and well connected, do not hesitate and contact us for more information!



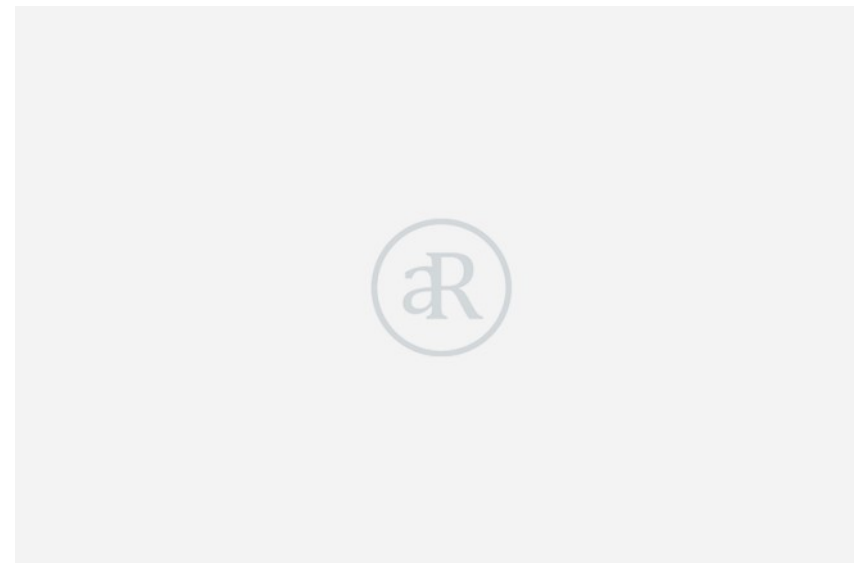
PROPERTY DESCRIPTION

CURRENT TENANT	NO TENANT
STORE	SURFACE m ²
Ground floor	65 m ²
TOTAL	65 m²



ECONOMICS INFORMATION

Asking price	€ 10,000 + taxes
Professional Fees	15% of the annual rent or the average of the escalation + taxes



c/ de la
portaferri^{sa}
17

Barcelona

PROPERTY | PICTURES



c/ de la
portaferriassa
17

Barcelona

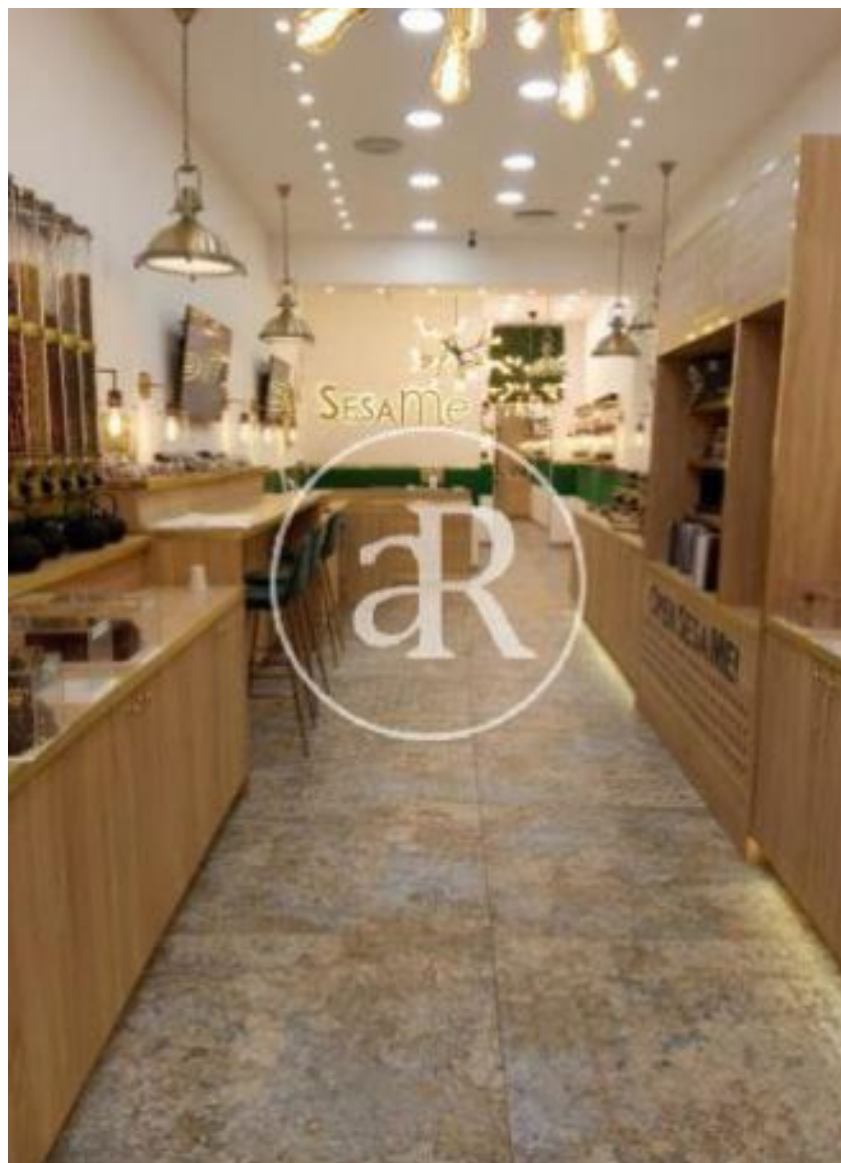
PROPERTY | PICTURES



c/ de la
portaferriassa
17

Barcelona

PROPERTY | PICTURES



c/ de la
portaferrissa
17
Barcelona

PROPERTY | PICTURES



c/ de la
portaferri^{ss}a
17

Barcelona

PROPERTY | PICTURES



c/ de la
portaferri^{ssa}
17

Barcelona

PROPERTY | PICTURES



c/ de la
portaferriassa
17

Barcelona

PROPERTY | PICTURES



c/ de la
portaferrissa
17

Barcelona

PROPERTY | PICTURES





Passeig de Gràcia, 85, 8^a planta
+34 935 288 909 • 08008 Barcelona

Serrano, 60, 4^a planta
+34 918 005 465 • 28001 Madrid

www.aretail.es

This information has been prepared by ARETAIL, with different information about the market. With the acceptance of this document, the recipient of the same undertakes not to copy, reproduce or distribute this Confidential Document to third parties, neither in its entirety nor in part, without the prior consent of ARETAIL, expressed in writing, as well as to keep permanently confidential all the information contained therein and that is not in the public domain

This Confidential Document has been prepared in order to provide general information about the real estate market. Although the information contained in this document is considered to reflect the true image of it, ARETAIL expressly declines all responsibility for the statements, express or implied, contained in this Confidential Document, for its omissions, or for any other oral or written communications made to any interested party.

Nothing contained in this Confidential Document is a promise or forecast for the future. ARETAIL reserves the right to request the future return of this Document at any time.